

## CALL TO CONVENTION



JOIN US

## OCTOBER 20-22

DoubleTree by Hilton, Green Tree  
500 Mansfield Avenue, Pittsburgh, PA 15205

**PTA Mission:**

*The overall purpose of PTA is to make every child's potential a reality by engaging and empowering families and communities to advocate for all children.*

## Schedule at a Glance 2017

### Friday October 20, 2017

|  |                     |
|--|---------------------|
| Registration                               | 8:30 AM – 5:00 PM   |
| Shop PTA open                              | 9:30 AM – 3:30 PM   |
| Breakfast/Leadership Development Session I | 9:30 AM – 11:00 AM  |
| Workshop 1                                 | 11:15 AM – 12:15 PM |
| Workshop 2                                 | 12:30 PM – 1:30 PM  |
| Lunch/Leadership Development Session II    | 1:30 PM – 2:15 PM   |
| Workshop 3                                 | 2:15 PM – 3:15 PM   |
| Leadership Development Session III         | 3:20 PM – 3:45 PM   |
| Workshop 4                                 | 4:00 PM – 5:00 PM   |
| Dinner on your own                         | 5:00 PM – 6:45 PM   |
| General Meeting I                          | 7:00 PM – 10:00 PM  |
| Reception                                  | 10:00 PM – 11:30 PM |

### Saturday, October 21, 2017

|                             |                                  |
|-----------------------------|----------------------------------|
| Polls open (if needed)      | 6:30 AM – 9:15 AM                |
| Registration                | 8:30 AM – 5:00 PM                |
| Sponsor Breakfast           | 7:30 AM – 8:30 AM                |
| Workshop 5                  | 9:15 AM – 10:15 AM               |
| Shop PTA open               | 10:00 AM – 2:30 PM               |
| Workshop 6                  | 10:30 AM – 11:30 AM              |
| Exhibit Hall open           | 10:30 AM – 2:30 PM               |
| Speed Vending and lunch     | 11:30 AM – 1:00 PM               |
| Keystone PTA Meeting        | 12:15 PM – 12:45 PM              |
| Dedicated Exhibit Hall Hour | 1:00 PM – 2:00 PM                |
| Workshop 7                  | 2:10 PM – 3:00 PM                |
| General Meeting II          | 3:15 PM – 5:45 PM                |
| Pre-banquet Reception       | 6:30 PM – 7:00 PM                |
| Banquet                     | 7:00 PM – 10:00 PM               |
| Reception                   | <i>Immediately after banquet</i> |

### Sunday, October 22, 2017

|                                 |                     |
|---------------------------------|---------------------|
| Awards Breakfast                | 8:00 AM – 10:30 AM  |
| General Meeting III (if needed) | 10:30 AM – 12:30 PM |

## Inside This Issue

|  |                 |
|--|-----------------|
| Greetings from Convention Chair  | 4               |
| Come Build Bridges... Greetings from Local Convention Coordinator                                | 4               |
| Special Guests   | 5               |
| Workshop Presenters  | 6               |
| Workshop Descriptions  | 10              |
| Awards   | 13              |
| Special Ticketed Events  | 14              |
| Notice of the Annual Meeting of the Keystone PTA   | 15              |
| General Meetings   | 16              |
| Pennsylvania PTA Honorary Life Memberships   | 17              |
| Election of the 2017-2019 State Board of Managers  | 18              |
| Incoming Pennsylvania PTA President  | 19              |
| Slate of Nominees for the 2017-2019 State Board of Managers                                      | 19              |
| Nominees for the State Board of Managers   | 20              |
| Why Should I Consider Moving Up in PTA?  | 21              |
| Proposed Amendments to the Pennsylvania PTA Bylaws   | 22              |
| Free Advocacy Training Events Sponsored by Pennsylvania PTA                                      | 22              |
| Pennsylvania PTA 2017-2019 Legislative Priorities  | 22              |
| Pennsylvania PTA 2017-2019 Legislative Program   | 23              |
| Pennsylvania PTA Resolutions: Rescind Importance of Early Care and Education on School Readiness | 25              |
| Pennsylvania PTA Resolutions: Rescind Homework   | 26              |
| Pennsylvania PTA Resolutions: Rescind School Funding and the Negative Effect of Referendum       | 27              |
| Pennsylvania PTA Resolutions: Rescind Electromagnetic Field Exposure                             | 28              |
| Pennsylvania PTA Resolutions: Rescind Firearm Injury Prevention                                  | 29              |
| Pennsylvania PTA Resolutions: Rescind Sun Safety: Skin Cancer Prevention Measures at School      | 30              |
| Pennsylvania PTA Resolutions Skin Cancer Awareness   | 31              |
| Pennsylvania PTA Position Statement Mandatory Age to Enter School in Pennsylvania                | 32              |
| Pennsylvania PTA Resolutions: Accomplished Technology Education                                  | 33              |
| Pennsylvania PTA Resolutions: Reviewed 2017 Air Quality in School Buildings                      | 34              |
| Pennsylvania PTA Resolutions: Reviewed 2017 Parental Involvement in Education                    | 35              |
| 2017 Convention Rules  | 36              |
| Emergency Resolutions  | 36              |
| Elections & Campaign Guidelines  | 37              |
| General Convention Information   | 38              |
| Your School Can Win This Guitar  | 38              |
| Seeking Items for Delegate Bags  | 39              |
| Commemorative Convention T-Shirts  | 39              |
| Local Convention Committee Meetings  | 40              |
| Community Service Project: Jamie's Dream Team  | 40              |
| Basket Raffle  | 40              |
| Local Convention Committee Needs Your Help Bridges to Champions                                  | 41              |
| Helpful Hints for Convention   | 42              |
| Convention Greeting Ads & Patron Contributors Form   | 43              |
| Registration & Hotel Fees  | 44              |
| Registration Form  | 45              |
| Pennsylvania PTA State Board of Managers   | 47              |
| Voter ID Cards   | (Center Insert) |

**PTA in Pennsylvania** (ISSN 1072-3242). May/June 2017; Volume 92, Number 5. Published bi-monthly. Published at Pennsylvania PTA, 4804 Derry Street, Harrisburg, PA 17111-3440. Periodicals Postage Paid at Harrisburg, PA. POSTMASTER: Send address changes to PTA in Pennsylvania, 4804 Derry Street, Harrisburg, PA 17111-3440.

# Invitation to Convention

Debbie Munson, President



I am personally inviting you, along with your board, to attend the Pennsylvania PTA's 108<sup>th</sup> Annual Convention and Leadership Development, October 20-22, 2017 at the DoubleTree by Hilton in Pittsburgh. Come join us **build bridges** between PTA, our members, and our partners in the City of Bridges! The registration form is included in the back of this issue as well as on the Pennsylvania PTA website, [www.papta.org](http://www.papta.org).

Convention 2017 will have a brand new look! Friday morning, we will bridge the gap between what you know and what you need to know about running a PTA. If you are a new officer or are taking on a new position in your PTA, or if you want to learn more about how to be a good board member, chairman or officer, Leadership Development will start at 9:30 AM on Friday morning, October 20. The registration table will be open at 8:30 AM. Breakfast and lunch are included with the cost of registration. We will have whole group and breakout sessions.

At 4:00 PM, we will cross the bridge into Convention with a workshop designed especially for those attending convention for their first time. We will also be holding two other workshops concurrently that will be presented by representatives from the Pennsylvania Department of Education and one of our partner organizations.

This is going to be an exciting year. General Meetings will be set up with tables so you have a place to set your glass of water, voting card and notebook to take notes. You won't have to try to balance everything on your knees, or under your chairs! Elections for the next State Board of Managers will take place Friday evening during General Meeting I.

Saturday morning we will have the voting booths open, if we have any contested positions. Please consider attending the Sponsor Appreciation Breakfast, our way of showing those who sponsor our convention that we appreciate them. There will be an Exhibitor Hall on Saturday, and Speed Vending will be back! Be sure to order a lunch to enjoy while the different exhibitors come to your table to tell you all about their products and services. This will be followed by an hour to browse the exhibit hall and General Meeting II. There will also be workshops scattered throughout the day for you to attend.

Saturday evening we will hold our annual banquet where several awards will be presented, and the newly elected State Board of Managers will be installed. This will be followed by a reception.

Sunday morning we will have the Awards Breakfast. The Passport to Leadership awards will be given out, as well as the Membership Traveling Trophy and several other awards. There will also be a special gift to be given to one member who registered for convention and is present at the breakfast, to take back to their PTA for their music program. There is more information about it in this issue.

So with ALL that is happening October 20-22, I just KNOW you will want to cross the bridge with a friend and register for Convention 2017: **Building Bridges!**

## CALL TO CONVENTION

Pennsylvania PTA hereby calls its constituent associations (local units and councils) to send accredited delegates (voting members) and non-voting members to the 108<sup>th</sup> Annual Pennsylvania PTA Convention to be held October 20-22, 2017 at the Doubletree by Hilton - Green Tree, 500 Mansfield Ave, Pittsburgh, PA 15205.

## Still to Come....

Look for supplemental convention information that will be posted online at [www.papta.org](http://www.papta.org) and in the July/August issue of the *PTA in Pennsylvania*.

## Greetings from our Convention Chair

*Bonita Allen, President-Elect, Convention Chair*



The Convention Committee welcomes you to our **October** convention! We are delighted and thrilled that you will join us for this brand new, energizing, and exciting event. At this convention we are **Building Bridges**. On Friday morning, **bridge the communication and engagement gap** with professional development that will help increase your understanding of purpose and roles, strengthen your membership, and polish your leadership skills. On Saturday, **bridge the encouragement gap**. Did you know that support, encouragement, and promotion are synonyms for advocacy? Find out how to partner with other organizations to help our students. Understand and appreciate how to be a voice for your child and all of Pennsylvania's children and youth! In addition, convention delegates are part of the parliamentary system, and have an opportunity to influence the direction of the Pennsylvania PTA. And your vote can and will make a difference! Throughout the weekend take advantage of the many opportunities to **bridge the knowledge gap**. Meet PTA representatives from across Pennsylvania and nationally! New PTA leaders will get information to know exactly what to do to help your PTA run smoothly. Experienced PTA leaders will get the latest updates to keep your PTA current, as well as practical examples to help you be more efficient effortlessly. And then continue **building bridges** during a great Saturday banquet, the Sunday awards breakfast, and fun entertainment nightly. See you in Pittsburgh!

## Come Build Bridges...

*Claudine Walasik, Local Convention Coordinator*

Come build bridges with the Pennsylvania PTA in Pittsburgh, the City of Bridges! Meet the State Board of Managers along with other PTA leaders and members that share the same mission for our children. Join in the celebration as our new Pennsylvania PTA President, Bonita Allen, takes office. Learn how to successfully run your PTA by attending Leadership Development workshops, speak to exhibitors and see the special deals and incentives they offer to PTAs, and see firsthand how General Meetings are conducted. Convention is open to members and non-members alike.

Pittsburgh is not only known as the City of Bridges, but also The Burgh, Steel City, and City of Champions. Our fine city features 2 inclines, 446 bridges and 30 skyscrapers. There's always something to do during your free time with Station Square, the Cultural District, North Shore and the Strip District all within a 10 minute drive from the hotel, or stay at the hotel and mingle with other convention guests.

Looking forward to seeing you **building bridges** at our 2017 Convention in Pittsburgh!



*These and other photographs featured throughout this publication are from the 107<sup>th</sup> Annual Pennsylvania PTA Convention which was held in Allentown. More pictures can be found in the May/June issue of "PTA in Pennsylvania" or by visiting Pennsylvania PTA's website, [www.papta.org](http://www.papta.org).*



## Special Guests

### General Meeting I

*Ron Cowell, President, Education Policy and Leadership Center (EPLC)*



Since 1998, Ron Cowell has been the president of The Education Policy and Leadership Center (EPLC), an independent, non-partisan and not-for-profit organization based in Harrisburg. Previously, Ron served as a member of the Pennsylvania House of Representatives for twenty-four years. While in the Legislature, he served as the majority or minority chair of the House Committee on Education for twelve years. He also served for twelve years as a member of the Pennsylvania State Board of Education. Ron is an experienced policy leader who also is a frequent speaker, writer and consultant concerning education policy issues. Ron is the recipient of the Pennsylvania PTA Life Membership.

### General Meeting II

*Carol Ritter, Motivational Speaker, Pennsylvania PTA Past-President 2003-2005*



Carol is an accomplished, award-winning Professional Speaker, Fundraising Strategist, Results Only Executive Coach, Featured Writer and Small Business & Non-Profit Consultant. She co-founded CarolTalks.com in 1994 and has shared her message with over half-million educational, non-profit, and small business leaders nationwide. Her innovative strategies provide company leadership with bullet-proof ideas for growing, enhancing and strengthening their businesses. Carol is a weekly columnist for the Home News and has been featured in Lehigh Valley Business. She has raised millions of dollars for Lehigh Valley non-profits and has helped develop strong innovative boards and committed volunteer teams.

Carol previously served as President of the Pennsylvania PTA from 2003-2005 and as the Membership Chair for the National PTA in 2006-07. She recently completed her term as Board Chair for St. Luke's Hospital Visiting Nurses Association and Hospice and is Past-President of the National Speakers Association in Philadelphia. In 2011-12 she was selected as Pennsylvania's Speaker of the Year and awarded Most Likely to Succeed in the Speaking Business. In April 2015, she received the Good Scout award given by the Boy Scouts of America.

### Philip Horn - Banquet

*Executive Director of the Pennsylvania Council on the Arts.*



Philip is a trained facilitator with over twenty five years of experience. He is trained in the Technology of Participation developed by the Institute of Cultural Affairs in both facilitation and participatory strategic planning. Horn formerly served as Director of the Touring & Presenting Program and Arts in Education/Artists at the California Arts Council from 1982 to 1993. He was the first Managing Director of the East Lansing Arts Workshop. In 2005 he received the Gary Young Award from the National Assembly of State Art Agencies. In 2011 he received the Excellence in Leadership from VSA, the International Organization for Art and Disability. Philip was the recipient of the

2013 Annual Association of Performing Arts Presenters (APAP) award, The Sidney R. Yates Award for Outstanding Advocacy on Behalf of the Performing Arts. He is the first leader of a state arts agency to receive this award.

Philip holds an honorary Doctorate from Juniata College in Huntingdon, PA, is the recipient of Pennsylvania PTA Honorary Lifetime Membership, and of the "Friend of Pennsylvania PTA" award. He served on the Board of Directors of the Mid-Atlantic Arts Foundation for 17 years and has also served on the National PTA board.

## Workshop Presenters

### 101 Presidents 4-1-1: Congratulations... You're Elected! Now What???

Presenter - Bonita Allen, President-Elect



Bonita currently serves as the President-Elect and will be installed as President during this convention. She received her B.A. from Harvard University and has completed all requirements except the dissertation for a Doctorate in Education at Harvard Graduate School of Education. Ms. Allen is a former member of the Pennsylvania Title I State Parent Advisory Council (SPAC), and continues to provide training (increasing student achievement by strengthening family engagement) and technical assistance to school districts across Pennsylvania as a SPAC Parent Involvement in Education (PIE) consultant.

### 102 Secretary: Just The Facts, Ma'am

Presenters: Bonnie Fagan, Secretary and Maryann Kolbeck, Parliamentarian

Bonnie's photo and bio can be found on page 20 (Nominees to the State Board of Managers).



Maryann Kolbeck completed the Parliamentary Procedure course from the University of Wisconsin and became a member of the National Association of Parliamentarians in 2003. Maryann is currently employed by the Pennsylvania PTA serving as their official Parliamentarian and previously served as the Parliamentarian for the Maryland PTA. She served the National PTA as a member of the board, the Nominating and Leadership Development Committee, and Region II Director. She also served as the New Jersey PTA President. Maryann resides in New Jersey with her husband Todd, of nearly 40

years. They have one son, Justin, daughter-in-law, Kate, granddaughter, Lilly, and grandson, Anthony. Maryann has been given PTA Honorary Life Memberships in ten states and the National PTA and is the recipient of the New Jersey Woman of the Year Award for Business Owners - Non Profit Sector.

### 103 Membership

Presenters: Ginny Wade, Membership & Extension Chairman and Kali Wade, Technology & Social Media Chairman

Ginny Wade's photo and bio can be found on page 20 (Nominees to the State Board of Managers)



Kali Wade lives in North Coventry. She is a graduate of the Owen J. Roberts School District and has a degree in Graphic Design. She has volunteered in her community for the past several years at the Coventry Food Pantry. She was a Girl Scout as a youth and served as a Girl Scout leader. With a soft spot for the arts, Kali has been a PTA Reflections chair for local PTAs as well as for Region 12. She has previously served as an assistant to the Region 12 Director and is currently serving as Technology & Social Media Chairman.

### 201 Audits, Reports and Budgets! What Do I Do?

Presenter - Cindy Horner, Treasurer



Cindy graduated cum laude from Mansfield University in 1989 with a B.S. in Business Administration. Her family moved to New Hampshire and Cindy stayed home to raise their children. Cindy became an active PTA member when her oldest child entered kindergarten. She held various positions in the local unit until their family returned to Bellefonte. Not even settled in to their new environment, Cindy jumped right in to serving the local PTA, as well as her youngest son's playschool. Cindy has served as chairman or co-chairman of many committees, and has held the position of Vice-President of the Benner Elementary PTA. She has served as Region Vice-President for Region 8 and Region 6, and is currently the state treasurer. In addition to

serving the PTA, Cindy participated in the Parent Information Network, was a Cub Scout leader, Boy Scout Merit Badge Counselor, and has served on the Bellefonte School District Parent Council.

## Workshop Presenters

### **202 I Want to Advocate But I'm Not Sure How**

*Presenter - Tara Purcell, Legislation & Advocacy Chairman*

Tara's photo and bio can be found on page 20 (Nominees to the State Board of Managers).

### **203 Bylaws Basics**

*Presenter - Julie Lesitsky, Bylaws & Policies Chairman*



Julie's focus of patient advocacy as a registered nurse turned to child advocacy after the birth of her first child more than 25 years ago. As that child entered school, she began her formal volunteer service to children as a local PTA school spirit committee chair when she engaged students and community groups in a contest to improve school climate. After leading at various levels of PTA, she joined the Pennsylvania PTA State Board of Managers in 2006. She served as the Bylaws and Policies Chairman from 2007-2009 and President from 2011-2013. Over the years she also served on the local public school board, religious school board, local library board, and the Penn State Cooperative Extension board of Carbon County. She has been awarded the Pennsylvania PTA Life Membership Award and the Volunteer of the Year award. Her formal advocacy training includes National PTA's Training Capacity Building Initiative, Education Policy and Leadership fellowship, and she served as a facilitator for Penn State's PROSPER project "Strengthening Families" program. She resides in Albrightsville, PA with her husband of 30 years and their two children.

### **301 How to Protect Your PTA's Funds & Limit Your Exposure to Theft**

*Presenter - Michele Morrow, Past-President and Consultant to the Pennsylvania PTA*



Through her leadership roles in the Pennsylvania PTA and the Boy Scouts of America, Michele has been providing training for volunteer leaders and parents for over 25 years. She served the Pennsylvania PTA as president for the 2009-2011 term and is currently serving as a consultant to the State Board of Managers and editor of the *PTA in Pennsylvania*. Michele is the recipient of PTA's Child Advocacy Award and Honorary Life Membership. She is a dedicated volunteer who also serves with the Boy Scouts of America and the East Allen Township Volunteer Ambulance Corps. She lives in Bath, PA with her husband Ken. They have two adult sons (one a police officer, one a pilot, and both are Eagle Scouts and EMTs) and three amazing grandchildren.

### **302 Personal Storytelling: Finding Common Ground through Shared Experiences, Values & Goals**

*Presenters - Beth Yenig, National PTA Manager of Advocacy and Jacki Ball, National PTA Director of Government Affairs*



Beth joined National PTA as Manager of Advocacy in March 2017. Prior to this she has worked on progressive issue advocacy campaigns on issues including immigration, climate change and predatory lending. Beth specializes in helping non-profit organizations use grassroots organizing principles to grow their advocacy capacity. She has also worked on political campaigns at the local, state and federal level. Beth has a B.A. in Political Science from Muhlenberg College and a J.D. from The George Washington University Law School and is admitted to practice law in New York.



Jacki leads PTA's federal public policy agenda and lobbying efforts. Prior to joining National PTA, she was the Associate Director of Advocacy at the National Association of Secondary School Principals (NASSP). Jacki has spent her entire career in either the classroom or government relations. She started her career as a history and government teacher in Fairfax, Va. Jacki has worked on Capitol Hill as a legislative aide and served as Manager of Government Relations for Reading is Fundamental (RIF). She is an active member of Women in Government Relations (WGR) serving as Secretary for the Board of Directors and member of the Education Task Force. Jacki has a Bachelor's Degree from

Wake Forest University in Winston-Salem, NC, and a Master's Degree from the University of Florida in Gainesville, FL.

## Workshop Presenters

### 303 Reflections: From Beginning to End

*Presenter - Nellie Connolly, Arts in Education Chairman*



Nellie has been married for 21 years and has four children who have all participated and benefited from the Reflections program. She has also participated in Reflections as a student and has been influenced in a positive, artistic way by the program! Nellie chaired Reflections for years at the local, council, regional and state levels, seeing changes and learning the ins and outs of the program which has led to the many ideas to improve the Reflections program in category expectations and simplified paperwork. With a Bachelor's Degree in Art Studio and a Master's Degree in Art Therapy, Nellie is a counselor for Northwest Human Services, Penn State Extension and Head Start. She also owns her own café in an artistic and culturally rich community where she decorates cakes and promote the arts through open mic nights and displaying area artists' works.

### 401 First Timers to Convention

*Presenters: Debbie Munson, President and Maryann Kolbeck, Parliamentarian for Pennsylvania PTA*



Debbie began her career in PTA at Tracy Elementary School when her son started kindergarten. She continued at the local and council level while her sons were in school. She currently serves as President of the Pennsylvania PTA and has previously served as Region 1 Vice-President, Treasurer, Region 2 Director, Bylaws & Policies Chair, and President-Elect. She received the Pennsylvania PLM from Tracy PTA and was recently awarded the Spirit of Millcreek Award from Millcreek School District and Township for her volunteer work with Millcreek schools and students.

Debbie has also served as a Girl Scout leader for her younger sister and as a Cub Scout den leader for both of her sons. She serves as treasurer for the Rosary Society at her

church and volunteers as a neighbor-to-neighbor fundraiser for several charities. Debbie currently lives in Millcreek Township with her husband David and their three dogs.

Maryann's photo and bio can be found under Workshop 102.

### 402 The Pennsylvania ESSA State Plan

*Presenters - Members of the Pennsylvania Department of Education Staff to be announced.*

### 403 Increasing Academic Success Through Decreasing Chronic Absence

*Presenter - Caroline Allen, PSAYDN and Past-President and Consultant to the Pennsylvania PTA*



Caroline joined the Pennsylvania Statewide Afterschool/Youth Development (PSAYDN) team as a coordinator in November 2011. Previously, she worked for the Pennsylvania Parent Information and Resource Center and completed her term as President of Pennsylvania PTA in 2009. In addition, Caroline served as a member of the National PTA Legislative Committee, the Pennsylvania Council of the Arts, and as a faculty member at Furman University's Riley Institute. Caroline holds a Bachelor's Degree in both History and French from Gettysburg College and is a graduate of the EPLC Education Policy Fellowship Program and the White-Riley-Peterson Policy Fellowship Program.

### 501 Engaging Parents Beyond the Permission Slip

*Presenters - Ryan Riley and Shelly Grim, Communities in Schools of Pennsylvania*



Ryan Riley is the President and State Director of Communities In Schools of Pennsylvania, and works in partnership with state and local elected officials, as well as community and business leaders to support and sustain services aimed at improving education across Pennsylvania. He has a Bachelor's Degree from Widener University, and is a graduate of the Education Policy Fellowship Program. Ryan has presented in a variety of forums on higher education, student leadership, fundraising, and government advocacy.

Shelly Grim (photo not available) joined Communities in Schools of the Lehigh Valley in September of

## Workshop Presenters

2005, and has been the Director of Programs and Field Operations for Communities In Schools of Pennsylvania since March of 2016. She is from Allentown, PA. Shelly has a Bachelor's Degree in Psychology from Cedar Crest College, a Master of Social Work degree from Marywood University, and has her Social Work License (LSW).

**502 TBA** (*Workshop will be presented by either Pennsylvania Council on the Arts or National PTA*)

### **503 Mama Said There'd Be Days Like This**

*Presenter - Margo Zimmerman, Owen J. Roberts School District*



Margo's goal is to help return the joy of working with children to parents. Through presentations that include stories and participant interaction, she covers topics including student achievement, positive discipline, and proactive parenting tools based on mutual dignity and respect. Her clients have included PTAs, churches and schools. Margo earned a Masters in Educational Administration, a Bachelor's in Elementary Education and a Certification in Gifted Education. She is certified in several parent education programs. Margo has three grown children, and has been teaching for 24 years. She is currently employed with the Owen J. Roberts School District.

### **601 Policies and Paperwork for Local and Council PTAs**

*Presenters - Debbie Munson, President and Julie Lesitsky, Bylaws & Policies Chairman*

Debbie's photo and bio can be found under Workshop 401.

Julie's photo and bio can be found under Workshop 203.

**602 TBA** (*Workshop will be presented by either Pennsylvania Council on the Arts or National PTA*)

### **603 Screenagers-I**

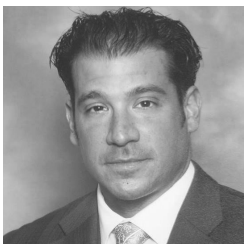
*Moderators - Kali Wade, Technology & Social Media Chairman and Ginny Wade, Membership & Extension Chairman*

Kali's photo and bio can be found under Workshop 103.

Ginny's photo and bio can be found on page 20 (Nominees to the State Board of Managers).

### **701 Building Bridges Between the School Administration and PTA**

*Presenter - Dr. Daniel Castagna, Superintendent, West Mifflin Area School District*



Dr. Castagna's professional career started as a classroom teacher in the Hopewell Area School District. He began his administrative work, as a principal, with the Baldwin-Whitehall School District in 2005. When he left Baldwin in 2007 for the West Mifflin Area School District, his leadership skills and education expertise moved him quickly up the administrative ladder, from Principal, to Director of Elementary Education, to Assistant Superintendent in two short years. When Dr. Castagna took the role of Superintendent of West Mifflin School District in 2011, he became the youngest person to hold the position of Superintendent of Schools in the state of Pennsylvania.

**702 TBA** (*Workshop will be presented by either Pennsylvania Council on the Arts or National PTA*)

**703 Screenagers II** (*See Workshop 603*)



## Workshop Descriptions

### SESSION 1 WORKSHOPS

**FRIDAY – OCTOBER 20, 2017**

**11:15 AM – 12:15 PM**

#### **101 Presidents 4-1-1: Congratulations... You're Elected! Now What???**

*Presenter - Bonita Allen, President-Elect*

What are the basic roles and responsibilities of a local unit president? Of a vice-president? How do you set an agenda, work with your board, and run meetings? Where can you find resources and support? Join me for a leadership "directory" of information and assistance, answering these questions and many more!

#### **102 Secretary: Just The Facts, Ma'am**

*Presenters - Bonnie Fagan, Secretary, and Maryann Kolbeck, Parliamentarian*

Psssttt – Don't tell anyone (especially a president or a treasurer) but the secretary has the most important job in your PTA. Minutes are more than "notes." They are the official record of all business conducted at each meeting and also as the "memory" for your organization. They are an invaluable resource to consult what happened in the past and can be used in case of any legal action involving your PTA. In this workshop, you will learn what you should (and shouldn't) include in the minutes, as well as how to make it easier to prepare, review and approve them.

#### **103 Membership: Where Did All the People Go?**

*Presenters - Ginny Wade, Membership & Extension Chairman and Kali Wade, Technology & Social Media Chairman*

Attendees will learn ideas on getting and retaining members, and what's expected of a membership chairman. Materials needed for workshop: Your experiences, what's working, what's not working, and a charged smart phone if you have one.

### SESSION 2 WORKSHOPS

**FRIDAY – OCTOBER 20, 2017**

**12:30 PM – 1:30 PM**

#### **201 Audits, Reports and Budgets! What Do I Do?**

*Presenter - Cindy Horner, Treasurer*

Attendees of this workshop will leave with the basic knowledge of the treasurer's duties.

#### **202 I Want to Advocate But I'm Not Sure How**

*Presenter - Tara Purcell, Legislation & Advocacy Chairman*

Ever thought to yourself... "Someone needs to speak up about that problem"... but felt that you couldn't be the one because you didn't know how or felt that no one would listen? Believe it or not you can be *that* person who speaks up for themselves and/or others, you can be the advocate that your child needs. This workshop will give you the tools to speak up and be a part of the change.

#### **203 Bylaws Basics**

*Presenter - Julie Lesitsky, Bylaws & Policies Chairman*

This workshop will cover general bylaws information including details about the process for updating bylaws using the current bylaws model from the Pennsylvania PTA and the process for amending (changing) a single item. It will include tips on electronic submissions to the Pennsylvania PTA for final approval.

## Workshop Descriptions

### SESSION 3 WORKSHOPS

Friday October 20, 2017

2:15 PM – 3:15 PM

#### **301 How to Protect Your PTA's Funds & Limit Your Exposure to Theft**

*Presenter - Michele Morrow, Past-President and Consultant to the Pennsylvania PTA*

All too often we hear about volunteers who embezzled funds from a local non-profit organization. We also find ourselves just simply unsure of what the proper financial process is. Even as volunteers, we have a fiduciary responsibility to ensure the funds are handled safely. This session will provide attendees with the basic tools for properly managing the association's funds in order to better protect themselves from embezzlement.

#### **302 Personal Storytelling: Finding Common Ground through Shared Experiences, Values & Goals**

*Presenters - Beth Yenig, National PTA Manager of Advocacy and Jacki Ball, National PTA Director of Government Affairs*

Your passion and personal connection to the work of PTA is one of the most important advocacy tools you have. Through storytelling, we can relate to others in a meaningful way to grow an organization, work with partner groups or influence decision makers. In this interactive workshop, you will learn how to develop a clear and powerful personal narrative that will help you connect with members, allies and administrators.

#### **303 Reflections: From Beginning to End**

*Presenter - Nellie Connolly, Arts in Education Chairman*

Learn about the history and benefits of the National PTA Reflections Program. Become familiar with the rules and guidelines in each art category. Discover resources that will help make it a successful year. Come ask questions and share experiences as we continue to make the Reflections program a memorable experience for you and our students!

### SESSION 4 WORKSHOPS

Friday October 20, 2017

4:00 PM – 5:00 PM

#### **401 First Timers to Convention**

*Presenters: Debbie Munson, President and Maryann Kolbeck, Parliamentarian for Pennsylvania PTA*

For those delegates who are attending their first convention, this workshop will answer your questions, let you know what to expect, and teach you how to participate in the general meetings. A review of Parliamentary procedure will also be given.

#### **402 The Pennsylvania ESSA State Plan**

*Presenters - Members of the PDE Staff*

Staff from the Pennsylvania Department of Education (PDE) will present the elements of the PA State Plan under ESSA (Every Student Succeeds Act) with particular focus on what parents need to understand and how we can be involved.

#### **403 Increasing Academic Success Through Decreasing Chronic Absence**

*Presenter - Caroline Allen, Pennsylvania Statewide Afterschool Youth Development Network, Pennsylvania PTA Past-President*

Attendance counts! Did you know that chronic student absence predicts lower school achievement even in kindergarten? Hear about how parents, schools and afterschool can work together to nurture a culture of attendance and ensure students do not miss learning. Research-based strategies and supportive approaches.

## Workshop Descriptions

### SESSION 5 WORKSHOPS

**Saturday, October 21, 2017**

**9:15 AM – 10:15 AM**

**501 Engaging Parents Beyond the Permission Slip**

*Presenters - Ryan Riley and Shelly Grim, Communities In Schools of Pennsylvania*

Schools often view parents as a negative barrier or half-hearted participants in the lives of their children. As our schools become the community support center for children, Communities In Schools (CIS) will share some valuable insights on engaging families, the struggle of parenting with barriers, and the positive work of some communities and schools on creating strong bonds with parents.

**502 TBA** (*will be either Pennsylvania Council on the Arts or National PTA*)

**503 Mama Said There'd Be Days Like This**

*Presenter - Margo Zimmerman, Owen J. Roberts School District*

Are you having too many of “those days” with your kids? This presentation will address how parents can respectfully and lovingly deal with children who are trying to push our buttons. Participants will walk away with tools they can use immediately to help avoid power struggles with their children and make parenting fun.

### SESSION 6 WORKSHOPS

**Saturday, October 21, 2017**

**10:30 AM – 11:30 AM**

**601 Policies and Paperwork for Local and Council PTAs**

*Presenters - Debbie Munson, President and Julie Lesitsky, Bylaws & Policies Chairman*

The increased emphasis on transparency and accountability of today requires more formal attention to governance and administration. While the IRS does not formally require non-profit associations to have certain policies, they do ask questions on the 990 forms about them. In this workshop, those basic policies will be discussed and you will be provided with samples that you can take back to your PTA/PTSA unit to adopt & keep with your other governance documents.

**602 TBA** (*will be either Pennsylvania Council on the Arts or National PTA*)

**603 Screenagers-I**

*Moderators - Kali Wade, Technology & Social Media Chairman and Ginny Wade, Membership & Extension Chairman*

During this double session, attendees will view the movie *Screenagers* followed by a discussion period.

About the movie and creator: Are you watching kids scroll through life? With their rapid-fire thumbs and a six-second attention span? Physician and filmmaker Delaney Ruston saw that with her own kids and learned that the average kid spends 6.5 hours a day looking at screens. She wondered about the impact of all this time and about the friction occurring in homes and schools around negotiating screen time—friction she knew all too well. Delaney Ruston is a filmmaker, Stanford trained doctor and mother of two. Along with *SCREENAGERS*, her award-winning feature documentaries include *Unlisted: A Story of Schizophrenia* (PBS), about her father, and *Hidden Pictures* (PBS) about global mental health. Delaney has been invited to speak and screen these and other films to hundreds of audiences in diverse settings around the world such as at primary schools, conferences, medical centers, universities, the United Nations, the TEDx stage in Seattle and the World Health Organization. For her work in using film in launching advocacy movements, Delaney has won several awards.



## Workshop Descriptions

### SESSION 7 WORKSHOPS

Saturday, October 21, 2017

2:10 PM – 3:00 PM

#### 701 Building Bridges Between the School Administration and PTA

Presenter - Dr. Daniel Castagna, Superintendent, West Mifflin Area School District

Maintaining open lines of communication with parents, administrators and the community about key areas in our schools such as: student and school safety and security, state funding and budgeting Information, and keeping open lines of communication and encouraging parent involvement.

#### 702 TBA (will be either Pennsylvania Council on the Arts or National PTA )

#### 703 Screenagers II

See Workshop 603

## Awards

The deadline to submit all awards applications and documents to the state office has been extended to **June 30, 2017**. Awards being presented at Convention include:

- ◆ Champion for Children Award
- ◆ Wellness Award
- ◆ Dr. Walt Kealey Leadership Award
- ◆ Most Outstanding School Nurse Award
- ◆ PTA/PTSA Unit of the Year Award
- ◆ Most Outstanding Membership Award
- ◆ Most Outstanding Newsletter Award
- ◆ Most Outstanding Published Article
- ◆ Volunteer of the Year Award



PTAs submitting entries must be units in good standing. Complete rules and entry forms are available online at [www.papta.org/Awards](http://www.papta.org/Awards) in the Members Only section. All entries are to be sent directly to the state PTA office and must be postmarked no later than **June 30, 2017**.

Pennsylvania PTA  
4804 Derry Street  
Harrisburg, PA 17111



## Special Ticketed Events

### FRIDAY, OCTOBER 20, 2017

#### Leadership Development Session I

9:30 AM – 11:00 AM

This session includes breakfast and will focus on Board Basics, Standards of Affiliation, and Awards. Do you want to know how to function as a board? Do you know what the Standards of Affiliation are? Have you applied for any of Pennsylvania PTA's Awards?

*Breakfast menu includes fresh fruit, freshly baked breakfast pastries, butter and preserves, orange, cranberry and tomato juice, freshly brewed coffee and herbal teas.*

*The cost of breakfast is included in the Leadership Development registration fee.*

#### Leadership Development Session II

1:30 PM – 2:15 PM

This session includes lunch and will focus on Male Engagement. Fred Vella, who has been involved in PTA for years, will help us learn how to get more men involved in PTA.

*Lunch menu includes smoked turkey, ham, and roast beef, garlic aioli, tomatoes and lettuce on a French baguette, hand-made potato chips and fresh fruit, iced tea and coffee.*

*The cost of lunch is included in the Leadership Development registration fee.*

#### Friday Night Reception

10:00 PM – 11:30 PM

Relax and enjoy networking with other PTA leaders from across the state.

*This is free for convention registrants. A cash bar will be available.*

### SATURDAY, OCTOBER 21, 2017

#### Sponsor Appreciation Breakfast

7:30 AM – 8:30 AM

Join the State Board of Managers and other convention attendees at the breakfast where we will recognize and thank our sponsors for their generosity in giving financial support to Pennsylvania PTA and its mission.

*Cost is \$33 which includes: Scrambled eggs, apple wood smoked bacon, breakfast sausage, seasoned potatoes with peppers and onions, freshly baked pastries, seasonally inspired fresh fruit display, chilled orange, cranberry and tomato juices, coffee and herbal teas.*

#### Speed Vending / Boxed Lunch

11:30 PM – 1:00 PM

Enjoy your lunch and let the exhibitors come to you! During this high-energy event, the delegates stay at the table while the exhibitors visit and explain their product or program. Every time the bell rings, two new exhibitors will come to your table. You will have time to visit more with them later in the exhibitor hall.

*Boxed Lunch can be purchased for a cost of \$25. All boxed Lunches include: Bag of chips or pretzels, whole fruit, cookie and soft drink. Sandwich choice of roast beef hoagie, turkey club wrap, grilled Portobello vegetable wrap, or ham & cheese baguette. Please indicate your choice of sandwich on the registration form. (Please note that hotel regulations prohibit outside food from being brought into the speed vending area.)*

#### Pre-Banquet Reception

6:30 PM – 7:00 PM

All delegates are invited to join the Pennsylvania PTA President and members of the State Board of Managers, as well as National PTA Representatives, for a pre-banquet reception. Mingle with fellow PTA members from across the state, enjoy live entertainment, and celebrate PTA.

*There is no fee for this event. A cash bar will be available.*

#### Did You Know...

Hannah Kent Schoff served as the first president of the Pennsylvania Congress of Mothers (now known as the Pennsylvania PTA) from 1899-1902. She then went on to serve as president of the National Congress of Mothers from 1902-1920.

## Special Ticketed Events

### Banquet

7:00 PM – 10:00 PM

Celebrate PTA at our annual banquet. The Keynote speaker will be Philip Horn, Executive Director of the Pennsylvania Council on the Arts. The 2017-2019 State Board of Managers will be installed and the following awards will be presented: Champion for Children, Wellness Award, Dr. Walt Kealey Leadership Award, Most Outstanding School Nurse Award, and the Volunteer of the Year Award.

*Cost of the meal is \$46 and includes salad, entrée rolls, iced tea, coffee service and New York style cheesecake, and your choice of: honey cured pork loin with mashed potatoes and roasted carrots, chicken breast bruschetta with roasted potatoes and green beans, or herb seared tilapia with roasted potatoes and broccolini.*

*Please indicate your entrée selection on the registration form.*

### Post-Banquet Reception

Immediately Following Banquet – Midnight

Please join us at the post-banquet reception. This is a great opportunity to relax after the banquet and enjoy networking with other PTA leaders from across the state.

*There is no fee for this event. Light refreshments and a cash bar will be available.*

## SUNDAY OCTOBER 22, 2017

### Awards Breakfast

8:00 AM – 10:30 AM

This event will feature the presentation of the Membership Awards, Passport to Leadership Pins, Recognition of First Timers, Pennsylvania Honorary Life Members, and Presidents. The awards for the most outstanding membership flyer, newsletter and published article will also be awarded. Don't forget about the drawing for the winner of the guitar that was donated by Guitar Center.

*Cost of the meal is \$25 and includes scrambled eggs, apple wood smoked bacon, breakfast potatoes, freshly baked pastries, chilled orange, cranberry and tomato juices, freshly brewed coffee and herbal teas.*



## Notice of the Annual Meeting of the Keystone PTA\*

Saturday, October 21, 2017

12:15 PM – 12:45 PM

Doubletree by Hilton - Green Tree, 500 Mansfield Avenue, Pittsburgh, PA 15205

Please check in at the convention registration desk upon arrival for meeting room location.

\*The Keystone PTA, a state-wide PTA unit, was created for individuals who care about children, believe in the mission of the PTA and would like to become a member, but are not necessarily affiliated with a specific school or community based PTA. Visit [www.papta.org/keystone](http://www.papta.org/keystone) for more information.

## General Meetings

The primary purpose of Convention is to conduct the business of the association. This is an opportunity for delegates to influence the direction of the Pennsylvania PTA for the next year and term. In addition to business, meetings are filled with motivating and informative speakers, exciting student entertainment, award presentations, and much, much more.

Three general meetings are scheduled to carry out Pennsylvania PTA business. Delegates are responsible for attending these meetings, and are encouraged to take notes for reporting back to their local PTA units and councils.

**General Meeting I** will be held on Friday evening. The Keynote Speaker, Ron Cowell, President of the Education Policy and Leadership Center, will be speaking on Public Policy Advocacy in Harrisburg and Your School District. Advocacy makes a difference for children! Policymakers in Harrisburg and our school districts make important decisions that affect education opportunities for current and future generations of children, and each of us can influence these decisions. Learn more about the potential of thoughtful and effective public policies, and how each of us can use our voice to make a difference.

Also on the General Meeting I agenda will be the adoption of the convention rules, the independent audit report, amendments to the Pennsylvania PTA bylaws, and election of the 2017-2019 State Board of Managers.

**General Meeting II** is scheduled for Saturday afternoon. The Keynote Speaker will be Carol Ritter, Motivational Speaker and Pennsylvania PTA Past-President. She will be sharing a dozen CRAZY ideas for growing your membership. Carol says “Let's get mad and change the way we recruit and retain our most valued members. The more members you have the more effective your PTA will be. Let's take your average PTA from average to extraordinary. It's time to change, grow and be the best PTA in town.”

All unfinished business from General Meeting I will take place at this meeting. In addition, there will be recognition of the “First Timers” to convention, new local units in the state, and the recipients of National PTA Awards. The agenda for this meeting will also include the report of the President, the Legislation & Advocacy Committee, and the Reflections Committee.

**General Meeting III** will be held on Sunday morning, following the Awards Breakfast, only if needed to complete unfinished business.

Complete detailed agendas for General Meetings will be included in the official Convention Program.



*Listen here boys, You'd better bring  
your membership cards!...  
I hear Mary won't let us in without 'em!*

*He's right fellas...  
Don't forget those cards!*



## Voter ID Cards

Each delegate must submit a Voter ID card (located in the center of this publication) with their registration.

- ★ Local Delegates: Yours must be signed by your local unit president.
- ★ Council Delegates: Yours must be signed by both your local unit president and council president.

## Pennsylvania Honorary Life Membership Award (PLM)

The Pennsylvania PTA Honorary Life Membership Award is designed to be presented to individuals who have made significant contributions to the growth and development of children and PTA. Each year during convention, PLM recipients are recognized.

### Why present an Honorary State Life Membership Award?

In every PTA, there are individuals who have volunteered their time to help build PTA into an effective organization. This special recognition is a PTA's "thank you" to those people for their time, effort, strong belief in, work with, and support of PTA.

### Who might be a worthy recipient?

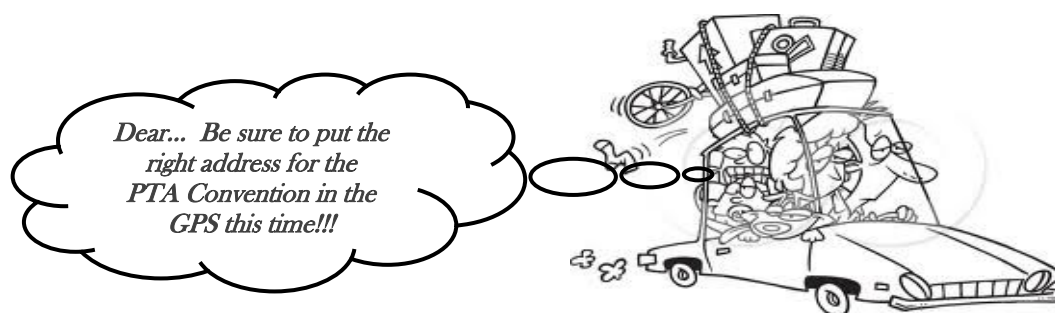
- ♦ PTA members who have demonstrated devotion to children and PTA.
- ♦ School representatives such as teachers, principals, superintendents, support staff, cafeteria staff, building custodians, and school board members who have given leadership and service to the PTA, or have demonstrated outstanding dedication to the students and PTA.
- ♦ Community members who made outstanding contributions to children, PTA, or public education.
- ♦ Local business owners who have shown support to children and PTA.

### What are ways a PLM could be presented?

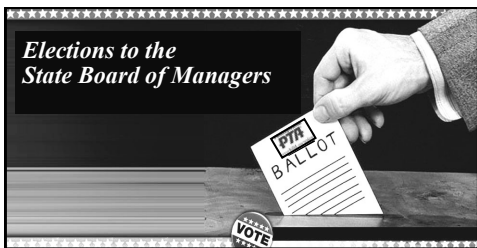
- ♦ During a PTA activity or function where a large number of members will be in attendance.
- ♦ During the Founders' Day celebration.
- ♦ At a school board meeting, if presenting to a school board member.

Be sure to publicize the presentation, such as in an article and photo in the local newspaper and school/PTA newsletters!

*To learn more about ordering and presenting a Pennsylvania Honorary Life Membership, visit [www.papta.org](http://www.papta.org), Members Only section - Awards.*



## Election of the 2017-2019 State Board of Managers



During convention, the delegates will elect all positions on the Pennsylvania PTA State Board of Managers, with the exception of President. According to the Pennsylvania PTA bylaws, since the Pennsylvania PTA Committee on Nominations has already reported their nominees for The Pennsylvania PTA Board of Managers (see page 19) anyone wishing to run for a position must do so from the convention floor. To do so, it is required that written notice must be provided to the state office at least forty five (45) days prior to the start

of convention of intent to be nominated along with their written consent to serve.

Have you been involved in your local unit for several years? Are you an advocate for the PTA and looking for ways for your voice to be heard for all children?

### ***Please consider running to serve on the Pennsylvania PTA State Board of Managers!***

The Pennsylvania PTA Bylaws state:

#### Article VIII: Board of Managers, Section 2. Eligibility

- a) Each member shall be a current member of a local PTA chartered by Pennsylvania PTA.
- b) Each member shall meet all other qualifications and eligibility provisions as stated elsewhere within these bylaws.
- c) A PTA member shall not serve as a voting member of the state board of managers while serving as a paid employee of, or under contract to, that association.
- d) Region directors shall have served as a local unit or council president or as an elected member of the board of managers prior to being elected as region director. Region directors must reside in or adjacent to the region of their election.
- e) A member shall no longer be eligible to serve on the Pennsylvania PTA board of managers in any capacity if they have been removed from the board of managers for failure to fulfill the duties and responsibilities as outlined in the Pennsylvania PTA Bylaws (as outlined in this Article VIII, Section 8.), the Standing Rules for State Board of Managers, and the Pennsylvania PTA Policy Manual.

#### Article IX: Officers, Section 2. Eligibility:

- a) For nomination for election to serve as president elect, a member shall have served on the board of managers in an elected position for a minimum of two (2) terms and meet all other qualifications and eligibility provisions as stated elsewhere within these bylaws.
- b) For nomination for election to serve as secretary or treasurer, a member shall have served on the board of managers in an elected position for a minimum of one (1) term and meet all other qualifications and eligibility provisions as stated elsewhere within these bylaws.

For additional information on the eligibility, qualifications, and duties of the state board positions, as well as a link to the Recommendation and Consent to Serve Form, please visit the Pennsylvania PTA website: [www.papta.org](http://www.papta.org), Members Only, Nominations to the State Board of Managers. Be sure to carefully review the Elections & Campaign Guidelines information which can also be found on page 37 of this publication.

Recommendation and Consent to Serve Form and any accompanying documents must be mailed to:

Pennsylvania PTA (Attn: Committee on Nominations)  
4804 Derry Street, Harrisburg, PA 17111  
**MUST BE POSTMARKED by September 5, 2017 or**  
**Emailed to [info@papta.org](mailto:info@papta.org) by 4:00 pm on September 5, 2017**  
(Faxes will not be accepted.)

Please include a copy of your current PTA membership card as it is required by the Pennsylvania PTA Bylaws and the Pennsylvania PTA Standing Rules for State Board of Managers that all board members be a member of a local PTA chartered by Pennsylvania PTA.



## Incoming Pennsylvania PTA President and Slate of Nominees

*The office of president is not available for nominations since the current President-Elect automatically succeeds to the position. This information is provided to introduce her to the membership.*



Bonita will begin her two-year term as Pennsylvania PTA President at the close of the 2017 Convention. She and her husband Steve have lived in Pittsburgh for over 20 years. They have two daughters: Xia who is in graduate school, and Ellie, who is in college.

Family engagement has been the cornerstone of Bonita's work for the past 25 years, and she has been aligned with the purposes of the National and Pennsylvania PTA

since long before she officially became a PTA member. She has been the chairman of several statewide organizations, and serves as a mentor to emerging parent leaders. Bonita has her own consulting business working as an instructor of teachers, parents, and administrators. As a Parent Involvement in Education (PIE) consultant, she operates hand-in-hand with the Pennsylvania Department of Education to provide training and technical assistance to school districts across the state, as well as at conferences statewide and nationally. Directly aligned with PTA, this training and assistance is focused on how families and school staff can work together cooperatively and effectively to support the education (physical, mental, social and spiritual) and the achievement of all children. Bonita previously served the Pennsylvania PTA as the Region 3 Director, the region with the largest number of PTAs. She has also chaired numerous committees including the Diversity & Inclusion, Convention, and Summer Leadership. She has represented the Pennsylvania PTA at the National PTA level, serving as a delegate to the National Council of States. Bonita also represented the Pennsylvania PTA in the Education Policy and Leadership Fellowship Program, 2015-2016 graduating class.

Bonita graduated from Harvard cum laude, and has completed all but the dissertation for a Doctorate at the Harvard Graduate School of Education. She is proud to serve as President of the Pennsylvania PTA for the next two years and looks forward to working cooperatively and effectively with PTA members, parent leaders, and other statewide organizations for the benefit and betterment of all our children, families, and schools across Pennsylvania.

### Slate of Nominees for 2017-2019 State Board of Managers

The Committee on Nominations presents the following slate:

**President-Elect - Tara Purcell**  
**Secretary - Bonnie Fagan**  
**Treasurer - No Nominee**

**Region 1 Director - No Nominee**  
**Region 2 Director - No Nominee**  
**Region 3 Director - No Nominee**  
**Region 4 Director - No Nominee**  
**Region 6 Director - No Nominee**  
**Region 7 Director - No Nominee**  
**Region 10 Director - No Nominee**  
**Region 11 Director - No Nominee**  
**Region 12 Director - No Nominee**  
**Region 13 Director - No Nominee**  
**Region 14 Director - No Nominee**  
**Region 15 Director - Maureen Ciavarella**  
**Region 16 Director - No Nominee**

#### Chairmanships

**Arts in Education - No Nominee**  
**Bylaws & Policies - Ginny Wade**  
**Family Engagement - No Nominee**  
**Health & Safety - Sharon Sitch-Brode**  
**Legislation & Advocacy - No Nominee**  
**Membership & Extension - No Nominee**  
**Resource Development - No Nominee**  
**Technology & Social Media - No Nominee**

**“One person can  
make a difference,  
and everyone  
should try.”**

— John F. Kennedy

## Nominees for the State Board of Managers

### President-Elect - Tara Purcell



Having been brought up in an educator's world, Tara, from a young age, chose a life journey focused on children. Learning is a journey that begins at first breath and continues throughout life. A strong belief that a child is a person of great importance, Tara reaches out beyond the classroom to grab onto all opportunities that are available to our children today. She has served as cheerleading moderator, soccer coach/referee, booster president, Odyssey of the Mind Coach/Judge and anything else that needed to be done. Tara started her PTA experience 21 years ago as an active member serving as a chairman of various committees and even as a local unit president, continuing to serve as Pennsylvania PTA's Region 10 Vice-President, Legislative & Advocacy Chairman as well as the Federal Legislative & Advocacy Chairman. She knows that today is an

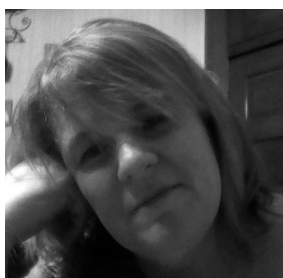
exciting building block that will shape the individual, the home, the future. While working as an Administrative Assistant in the Mount Carmel Area School District she continues being a strong volunteer and advocate for students and parents as the district's Parent Liaison for the past 14 years. A tried and proven leader, Tara has brought a new understanding and awareness of what it means to be involved with the local, district and state Parent Teachers Association. She is not a bench warmer but a hard-working player - helping to shape a new generation. If there is a special need - she doesn't stop until she finds the program that will fill that need. Tara has received recognition on all levels for her dedication and achievements, including receiving the Konrad Lindenberg Memorial Award from The Family Involvement Conference Committee. Tara Purcell is a true advocate that is there 24 hours and not just from the 1<sup>st</sup> to the last bell of the day.

### Secretary - Bonnie Fagan



Bonnie Fagan volunteered to be the Reflections' chairperson at her first PTA meeting when her twin sons started kindergarten in the fall of 2004. She moved on to serve as president of their elementary and middle schools, in addition to continuing to work with Reflections and many other local unit committees for the next 13 years. Bonnie also served as Erie County Council president for 2 years. She first joined the State Board of Managers in July 2011 as its first Resource Development Chairperson and then served as the Region 1 Director for 3½ years before becoming Secretary in January 2016. By the time of convention, she will be a new resident of an "empty nest" in Erie, as her sons will be college freshmen.

### Bylaws & Policies Chairman – Ginny Wade



Ginny lives in North Coventry, within the Owen J Roberts School District. She is the proud mother of two sons, two daughters, and grandmother of four. Ginny has had her own business of a Child Care/ Preschool since 1983 and currently serves the community as the manager of the local food pantry.

Within PTA, Ginny has been involved in different aspects for over 20 years, including officer positions at the local, council, and state levels. Currently serving the Pennsylvania PTA as Membership & Extension Chair, Ginny also served on the Executive, Male Engagement, and Family Engagement committees, and on the

Committee on Nominations. Ginny was also a team member on the National PTA UFEN team in Philadelphia.

***Encourage your fellow PTA members to join you at convention.  
See discounts for group registrations on page 44.***



## Nominees for the State Board of Managers

### Health & Safety Chairman - Sharon Sitch-Brode



Sharon resides in the Tussey Mountain Area School District and currently serves on the Pennsylvania PTA State Board of Managers as Region 7 Director, Awards Chairman, Outreach Team Leader, and is a member of the Executive, Legislative & Advocacy, Nominating, and Health & Safety committees.

Sharon has worked closely with many of the PTAs and wanted to note the strides they are making to provide opportunities PTA has to offer to their members, students, teachers, families as well as their communities. She would like to continue to work together to bring the importance of education on, how to think, to make good choices and act with a purpose, and that purpose being the strongest advocate we can be for all our children.

### Region 15 Director - Maureen Ciavarella



An active member of her community, Maureen is dedicated to her family, PTA council, and church. Raising family in Drums, PA with her husband Tony, she enjoys supporting her three children in their activities. Maureen is currently president of the Hazleton Area School District PTA council, and under her guidance, three new PTAs were chartered in the district. Where there was previously a strained relationship, Maureen facilitated development of relationships between PTA council, the school district superintendent, and high level district administration. She teaches sixth grade faith formation at St. John Bosco, where she also mentors ninth through twelfth grade youth group through various activities and meetings. Maureen is pursuing her bachelors of science in applied behavioral science through Misericordia University with future aspirations of obtaining her MSW to become a licensed family therapist.



### Why Should I Consider Moving Up in PTA?

- \* I BELIEVE in PTA
- \* To make a DIFFERENCE
- \* I am ENTHUSIASTIC
- \* For the COMRADERY
- \* I'm GOOD at what I do
- \* The HISTORY of PTA
- \* I was INSPIRED
- \* For KIDS
- \* I'm a good LEADER
- \* MENTORING
- \* Because I see a NEED
- \* To promote PARENT involvement
- \* For QUALITY education
- \* To REACH out
- \* To SHARE my knowledge
- \* To SHARE my expertise
- \* I like TRAVELING
- \* INTERESTING opportunities
- \* To learn VALUABLE skills
- \* It's EXACTLY what I like to do
- \* To ensure the FUTURE of PTA
- \* WHY wouldn't I?

If you have a interest in serving PTA at the state level, please consider running from the floor for one of the positions on the State Board of Managers. There are several positions that currently have no nominee. If you have the experience and the desire to help the Pennsylvania PTA move into the future, please consider coming aboard! For a list of positions up for election and details on running from the floor, see pages 18 and 19 of this publication.

## Proposed Amendments to the Pennsylvania PTA Bylaws

*Julie Lesitsky, Bylaws & Policies Chairman*

All proposed amendments to the Pennsylvania PTA Bylaws that will be brought forward at Convention will be posted in the July/August 2017 issue of the *PTA in Pennsylvania*.

### Free Advocacy Training Events Sponsored by Pennsylvania PTA

The Pennsylvania PTA invites you to learn more about how to let your voice be heard!

Join us for a FREE Advocacy Training to learn new skills to be a strong advocate for your children's education because we know you care!

Pennsylvania PTA has teamed up with expert organizer and advocacy trainer Aletheia Henry to help you:



- ⌘ Grow your skills as an advocate for your child
- ⌘ Develop new skills to help you fight for public education
- ⌘ Learn more about the Every Child Succeeds Act (ESSA)
- ⌘ Become a champion for your child and all children

All are welcome to attend any of these events. Each will be 10 AM - 4 PM. A light breakfast and lunch will be served at each event. Specific locations will be announced.

|         |                         |
|---------|-------------------------|
| June 3  | Pittsburgh area         |
| June 10 | Huntingdon area         |
| June 17 | Scranton area           |
| July 8  | Erie area               |
| July 29 | Southeast PA area (TBA) |

Go to this link for more information and to register: <https://goo.gl/forms/MFamnxJKzIce0HvL2>

### Pennsylvania PTA 2017-2019 Legislative Priorities

#### **Education**

Family Involvement in Education  
Charter School Reform & Improvement

#### **Health & Safety**

Bullying Prevention & Education  
School Nurse Services  
School Nutrition & Physical Activity

#### **Environment**

Extraction of Natural Gas (Fracking)  
Air Quality in School Buildings

## Pennsylvania PTA 2017-2019 Legislative Program

The Pennsylvania PTA Legislative Program guides any action taken by Pennsylvania PTA on proposed state legislation or regulations affecting the health, education or general welfare of all children and youth. The program comprises basic, broad statements that have been approved by voting delegates attending state convention.

### 2017-2019 Legislative Program

#### EDUCATION

**Career Education** - Encourage career education awareness in public schools and teacher preparation programs and the inclusion of parents in these programs.

**Community Use of School Facilities** - To urge local school boards to develop policies for the use of school facilities at no cost to groups that would benefit the entire community.

*(Cooperation with Education Related Organizations)* Preserve and improve quality education in all public schools.

**Elementary World Language Instruction** - Encourage all schools to initiate before or after school world languages instruction programs and to implement such a program into the regular curriculum.

**Parental Choice** - Support legislation that opposes any form of voucher for non-public or private schools.

**Parental Involvement in Education** - Provide for a comprehensive parent involvement policy in all school districts which utilizes parents in advisory, governance, and advocacy roles.

**Pay-to-Play School Programs** - Encourage full funding of sports and other activities for all children regardless of financial capability.

**Pennsylvania Value-Added Assessment System (PVAAS)** - Urge superintendents and school districts to implement PVAAS with the analysis of PSSA data from grades 3 through 8 as another tool to measure students' rate of growth over time.

**Privacy of Student Records - Military Recruiters** - Work with administrators and schools to ensure the privacy of student records respecting the rights of parents and students, and be mindful that parents should be involved in the important decision to enlist in military service.

**Public School Library Programs** - Educate parents on the value of public school library programs and the importance of professional librarians to student achievement, and to encourage policy and regulatory reform that sets standards for said programs.

**School to Work Programs** - Promote the school to work programs in all public schools.

#### ENVIRONMENT

**Air Quality in School Buildings** - Urge school districts to conduct an annual air quality assessment with an enforcement program and funding to ensure compliance when an indoor air quality problem occurs.

**Extraction of Natural Gas (Fracking)** - Encourage communities to be educated on the potential hazards of extracting natural gas and the disposal of waste.

**Radon Testing in Schools** - Urge local school districts to conduct radon testing in all schools and to educate the community about the dangers of radon.

#### HEALTH, SAFETY, AND NUTRITION

**Certified Athletic Trainers** - Encourage school districts to hire certified athletic trainers for interscholastic sports programs.

## Pennsylvania PTA 2017-2019 Legislative Program

**Cyberbullying/Cyber-harassment/Cyberstalking** - Support legislation that would provide adequate resources and support for victims of cyberbullying/cyber-harassment/cyberstalking and their families and set mandated penalties for offenders.

**Helmet Use and Bicycle Safety** - Encourage the use of bicycle helmets for all ages and conduct bicycle safety programs.

**PA School Breakfast Programs** - Support the adoption of breakfast programs in local school districts and educate and inform their communities regarding the benefits of school breakfast programs.

**Physical Activity** - Encourage school districts to provide quality, age- and developmentally-appropriate physical activities for a minimum 30 minutes per day through either physical education classes or mandatory recess.

**Playground Injury Prevention** - Encourage school districts and municipalities to enact stringent guidelines for school playground safety.

**Pre-School Vision Screening for Amblyopia & Strabismus** - Encourage implementation of preschool vision screening by local school districts or PTA and community volunteers.

**School Nurse Services** - Support legislation that would maintain the status of certified school nurses as primary health care providers and reduce the current school nurse/student ratio.

**Sports & Sportsmanship** - Encourage the hiring of coaches who exemplify the principles of fair play, honesty, and good sportsmanship and to help parents become positively involved.

**Tuberculosis Testing of Children** - Alert and educate parents about the renewed risk of TB and the need to have testing done as part of a child's routine physical examination.

**Youth Gang Awareness** - Protect children and youth from the influence of gangs and to work together to establish supervised after-school programs for children and youth as an alternative to gang involvement.

**Youth Suicide** - Support early screening and identification of suicidal behavior with input from mental health professionals and public school entities to complete professional development training on suicide awareness.



### THE IMPORTANCE OF EARLY CARE AND EDUCATION ON SCHOOL READINESS

- WHEREAS, A child's brain develops most rapidly before the age of 5; and
- WHEREAS, The percent of children attending full-day kindergarten in Pennsylvania is 54 percent and the national average is about 60 percent; and
- WHEREAS, The number of children attending pre-kindergarten in public schools in Pennsylvania is about 12,023; that number reflects a tiny fraction of the state's 4-year-olds; and
- WHEREAS, The inclusion of funding for Head Start in the state budget now equals \$40 million helping nearly 70 percent of the children eligible for Head Start to receive services; and
- WHEREAS, Only 16.3 percent of students in pre-kindergarten through third grade are in classes of 17 or fewer students; and
- WHEREAS, Research shows that children who are in classes of 17 or fewer students in kindergarten through third grade score better on standardized achievement tests than their peers in higher classes; and
- WHEREAS, More than 65 percent of all parents work outside the home and the cost of child care for two children at a private facility in Pennsylvania costs more than \$16,000 per year, exceeding the annual salary of a parent earning the minimum wage; and
- WHEREAS, Only 40 of the 501 school districts in Pennsylvania have chosen to use the Pennsylvania Department of Education's Accountability Block Grants to fund pre-kindergarten programs; therefore be it
- RESOLVED, That the Pennsylvania PTA and its constituent organizations encourage elected officials to propose continued increases for Accountability Block Grants, as well as funding for Head Start to support expanded pre-kindergarten, smaller class size and full-day kindergarten; and be it further
- RESOLVED, That the Pennsylvania PTA and its constituent organizations ensure that elected officials provide the necessary resources for child care, Head Start and other early care and education programs designed to help prepare children to enter school active, curious, eager and ready to learn; and be it further
- RESOLVED, That the Pennsylvania PTA and its constituent organizations educate parents, educators, local boards of education, law-makers and the community of the significance of early education and child care programs to ensure that young children encounter high-quality, early positive learning experiences so they develop skill necessary for school readiness before they enter kindergarten; and be it further
- RESOLVED, That the Pennsylvania PTA and its constituent organizations assure that children have a strong educational experience in the critical foundation years from pre-kindergarten through 3rd grade.

ADOPTED, 2007  
REVIEWED, 2012

Rationale: Contained in all the Whereas Clauses are numbers, percentages, and dollar amounts that fluctuate annually, depending on the budget. For the Resolution to be accurate, it would have to update annually. No Resolution should remain active if what's contained in the research is not accurate. The sixth Whereas Clause contains information not relative to early care, which is the title of the Resolution. The eighth Whereas Clause mentions "Block Grants" which do not exist any longer. National PTA adopted a Resolution entitled "Education Emphasis" which contains accurate, up to date information and truly deals with the importance of early care and education in reference to school readiness, this Resolution does not.

## HOMEWORK

- WHEREAS, Homework is a critical part of the learning process, it is the link between school and home that shows what children are studying and parents play an important role in the process; and
- WHEREAS, Homework helps children do better in school when the assignments are meaningful, have a specific purpose, come with clear instructions, be fairly well matched to a child's abilities and help develop a child's knowledge and skills; and
- WHEREAS, When homework is turned in to the teacher, graded, returned with constructive comments from the teacher, and discussed with students, it improves students' grades and understanding of their schoolwork; and
- WHEREAS, Homework leads to desirable outcomes such as time management, study skill, self-discipline, responsibility, and independence that immediately affect students' achievement in subject areas; and
- WHEREAS, Homework is used by teachers to help students understand and review the work that has been covered in class, to see whether students understand the lesson, and to help students learn how to find and use more information on a subject; and
- WHEREAS, Children who spend time on regularly assigned, meaningful homework, on average, do better in school and score better on standardized tests, and that the academic benefits of homework increase as children move into the upper grades; secondary students those in grades 7 through 12; and
- WHEREAS, Elementary school students gain academic benefit from reading and basic skill practice Home work; and
- WHEREAS, Overloading students at all levels with homework is counter-productive; and
- WHEREAS, For children in grades K-2, homework is more effective when it does not exceed 10-20 minutes each school day; older children, in grades 3-6, can handle 30-60 minutes a day; and
- WHEREAS, For junior and senior high school students, the amount of homework will vary by subject but there is no academic benefit after 2 hours a night for high school students and 1½ a night for middle schoolers; therefore, be it
- RESOLVED, That the Pennsylvania PTA and its constituent organizations educate parents how to help their students get the most out of homework and recommend strategies to help children develop good homework habits; and be it further
- RESOLVED, That the Pennsylvania PTA and its constituent organizations create greater understanding between families and teachers in regard to homework and provide opportunities for increased communication to keep families informed about what their children are learning and about the policies and programs of the teacher and school; and be it further
- RESOLVED, That the Pennsylvania PTA and its constituent organizations encourage University-based teacher preparation programs and local school districts through professional development to train teachers on creating homework assignments that advance learning, and be it further
- RESOLVED, That the Pennsylvania PTA and its constituent organizations encourage local school districts to adopt homework policies in regard to prescribed amount of homework consistent with research evidence and in accordance to students' developmental levels.

ADOPTED, 2007  
REVIEWED, 2012

Rationale: In June of 2016, National PTA passed a Resolution entitled "Homework: Quality over Quantity" which clearly encompasses all four Resolved Clauses contained in this Resolution. The National PTA Resolution also has the most up to date information in the Whereas Clauses. National PTA Resolutions and Position Papers belong to all state congresses and therefore, Pennsylvania PTA will still continue to advocate for quality over quantity in reference to homework.

### SCHOOL FUNDING AND THE NEGATIVE EFFECT OF REFERENDUM

- WHEREAS, The Commonwealth of Pennsylvania is nationally recognized annually as having one of the most inequitable school finance systems in the country which results in large opportunity gaps for many students; and
- WHEREAS, The Commonwealth of Pennsylvania over time has put into place several pieces of state policy which already place controls on local school district spending\*; but has continued to place requirements, regulations, and mandates on schools which often come with no state funding attached; and
- WHEREAS, The Pennsylvania school finance system is one which has been unresponsive to the needs of schools needing major improvement under No Child Left Behind mandates and real programmatic needs of students with disabilities which will contribute to the struggle of school districts trying to meet these demands; and
- WHEREAS, State government spending has equally increased in percentages compared to local school district spending during the last decade and disputes the argument that local school districts have “run-away” spending taking place, and
- WHEREAS, Proposals brought forward to implement referendum on school budgets have had unrealistic time lines, limit predictability for local school district, and would restrict school district’s responsibility to help all students reach academic standards and proficiency under the No Child Left Behind Act; and
- WHEREAS, The majority of a school district’s budget is locked into fixed costs that are not discretionary, and
- WHEREAS, It is questionable to ask that public schools be the only program of state and local government whose operating budget is subject to referendum; and
- WHEREAS, It is questionable to ask that public schools be the only program of state and local government whose operating budget is subject to referendum; and
- WHEREAS, The General Assembly should focus its efforts on establishing a reliable school funding formula that distributes state funding to school districts in an equitable manner; and
- RESOLVED, That the Pennsylvania PTA, in conjunction with its councils and local units and with other educational organizations, contact state legislators and the Governor to advocate strongly against the use of referendum as a public school funding policy.

ADOPTED, 2004  
REVIEWED, 2010

Rationale: This Resolution includes only one Resolved Clause which can never be accomplished because advocating against the use of referendum for public school funding is advocating against the only alternative a district has, other than applying for grants, to fund education. A Formula for the equitable distribution of funds passed in June of 2016 in the State Legislature and therefore, if extra funds are required to balance a district’s budget, referendum is the only answer. (referendum means the principle or practice of submitting to popular vote a measure passed on or proposed by a legislative body or by popular initiative) AARP also advocates against using referendum for taxes. Rescind – PTA advocates for children not where they get the money.... There is no option in place of the referendum.

## ELECTROMAGNETIC FIELD EXPOSURE

WHEREAS, The Environmental Protection Agency and the National Institutes of Health are currently studying potential health risks associated with electromagnetic field (EMF) radiation exposure, and

WHEREAS, A documented dose-response relationship has been established between prolonged exposure to electromagnetic fields, at levels greater than 2.0 milligauss per day, and the incidence of childhood cancers, primarily childhood leukemia, and

WHEREAS, Current scientific knowledge clearly suggests a health hazard great enough to justify the reduction of EMF exposure, therefore be it

RESOLVED, That Pennsylvania PTA informs and educates its members about potential health risks associated with EMF exposure, and be it further

RESOLVED, That Pennsylvania PTA supports procedures to accurately measure EMF levels in schools, on school grounds and in day care centers currently located near high voltage power lines, as well as comprehensive epidemiologic studies in those facilities exhibiting EMFs above accepted levels, and be it further

RESOLVED, That Pennsylvania PTA opposes the construction of new schools or child care facilities on property exhibiting EMF radiation greater than 2.0 milligauss per day and/or within 200 yards of high voltage lines or microwave towers.

ADOPTED, 1994  
REVIEWED, 2013

Rationale: The Whereas and Resolved Clauses are all outdated. The National Institute of Health published an article on August 12, 2014 which states “No adverse health effects, to date, have been established as being caused by cell phone use or exposure to electromagnetic fields”, the EPA through RADTOWN USA (Radiation in your town) published documentation in July of 2013 explaining “there is no clear scientific evidence that electromagnetic field exposure has any ill affect on one’s health”, the World Health Association, in 2014, stated “At present, the weight of the current scientific theory has not conclusively linked cell phone use with any adverse health problems”, and the National Institute of Environmental Health Sciences in August of 2014, published documentation stating “There is no supporting evidence that links electromagnetic field exposure to adverse health problems”. The Pennsylvania PTA cannot inform and educate its members about potential health risks association with EMF exposure, as stated in the first Resolved Clause, because there is no evidence, from any authority, that states there is such a health risk. The second Resolved Clause asks Pennsylvania PTA to support procedures to accurately measure EMF levels, which there is no process with which to measure EMF, and there is no evidence written that there is even a process to measure an EMF radiation level greater than 2.0 milligauss per day, as stated in the third Resolved clause.



## FIREARM INJURY PREVENTION

WHEREAS, The proliferation and access to firearms have reached epidemic proportions in Pennsylvania and across the nation, and

WHEREAS, A child is killed with a loaded gun every two hours in this country, and

WHEREAS, The American Academy of Pediatrics has recognized the threat to children with the following studies:

- a. 90% of accidental shootings are linked to easy-to-find, loaded hand guns in the home;
- b. the risk of suicide is five times greater if a gun is kept in the home;
- c. the risk of domestic homicide is three times greater if a gun is kept in the home;
- d. a gun kept in the home is 43 times more likely to kill a family member or friend than a criminal intruder;
- e. more than one-third of all accidental shootings of children occur at home or in the homes of friends and relatives; therefore be it

RESOLVED, That Pennsylvania PTA and its constituent bodies provide firearm safety programs and information for families and encourage firearm safety education in our schools

RESOLVED, That Pennsylvania PTA and its constituent bodies provide instruction for all parents in teaching their children the risks of firearm injury at home, in the homes of their friends and relatives, and in places where they visit and play.

ADOPTED, 1994

Rationale: The information contained in the Resolution, originally written in 1994 and never reviewed since that time, in both the Whereas & Resolved Clauses, is outdated and contains incorrect statistics and language not even recognized concerning the subject of gun violence. In 2013, after the tragic and senseless loss of students and faculty alike, in Sandy Hook, National PTA updated their Position Statement entitled “Gun Safety and Violence Prevention”, which contains an extreme “call to action” to prevent further incidents and includes updated information. National PTA’s Position Statement is written with intense necessary steps to take to try to prevent gun violence, much better than those contained in the two Resolved Clauses within this Firearm Injury Prevention Resolution. The second Resolved Clause in the Pennsylvania PTA Resolution specifically calls for “the Pennsylvania PTA and its local & council units to PROVIDE instruction for all parents in teaching their children the risks of firearm injury at home, in the homes of their friends and relatives, and in places where they visit and play”. The state PTA and its units and councils are not equipped to PROVIDE such instruction. Pennsylvania PTA could suggest to whom units and councils can reach out to for such instruction, such as local law enforcement agencies, associations such as “Safe Kids Pennsylvania, Preventing Issues at Home, at Play and on the Way”, the Department of Public Welfare, Bureau of Juvenile Justice Services which published a workbook entitled “Gun Violence Prevention”, and the National “Speak-Up Campaign”, which is a national awareness and education initiative that provides students with tools to improve the safety of their schools and communities from gun violence. Rescinding this Resolution would completely strike it from the books and if/when the President is asked to comment on the subject of gun violence, the information and bullet points within National PTA’s Statement could be referenced instead of the outdated information contained within this Resolution.

### SUN SAFETY: SKIN CANCER PREVENTION MEASURES AT SCHOOL

- WHEREAS, Skin cancer is one of the most common cancers afflicting adults and the chief cause of skin cancer is exposure to ultraviolet (UV) radiation emitted from the sun; and
- WHEREAS, Sixty to eighty percent of a person's lifetime UV exposure occurs during childhood and adolescence; and
- WHEREAS, UV rays are most powerful between 10:00 a.m. and 4:00 p.m. when students are outdoors daily on campus for significant time periods during these hours; and
- WHEREAS, Solar radiation, including UV rays, is classified by the U.S. Department of Health and Human Services as a "known human carcinogen," or cancer-causing agent, as are asbestos, radon, and tobacco smoke; and
- WHEREAS, A person's chance of developing melanoma, the most deadly form of skin cancer, is often directly related to his or her exposure to the sun during the pre-adult years and research shows, that the risk of developing skin cancer is increased by experiencing two or more blistering sunburns as a child; and
- WHEREAS, Over-exposure to UV radiation can also result in painful sunburns, cataracts, a weakened immune system and premature aging, including wrinkles and blotches; and
- WHEREAS, Skin cancer is highly preventable when specific sun-safety behaviors, including the use of sunscreen, protective clothing, wide-brimmed hats and sunglasses with UV protective lenses are adopted and where these behaviors are supplemented by environmental guidelines and sun protection policies, such as the provision of shade structures are implemented; therefore, be it
- RESOLVED, That the Pennsylvania PTA and its constituent organizations educate students, parents, school personnel and the community about the high incidence of skin cancer and the recommended strategies for reducing risk for this disease; and be it further
- RESOLVED, That the Pennsylvania PTA and its constituent organizations encourage local school districts and child care settings to develop a comprehensive set of sun-safety guidelines within the structured school environment; and be it further
- RESOLVED, That Pennsylvania PTA and its constituent organizations collaborate with local school districts to ensure that sun-safety policies are practiced and implemented during school and non-school hours; and be it further
- RESOLVED, That the Pennsylvania PTA and its constituent organizations seek to promote the practice of sun-safety measures and actions to protect the health safety of all children.

ADOPTED, 2006

# Pennsylvania PTA Resolutions

## SKIN CANCER AWARENESS

- WHEREAS, Skin cancer is one of the most common cancers afflicting adults and the chief cause of skin cancer is exposure to ultraviolet (UV) radiation emitted from the sun; and
- WHEREAS, UV rays are most powerful between 10:00 a.m. and 4:00 p.m.; and
- WHEREAS, A person's chance of developing melanoma, the most deadly form of skin cancer, is often directly related to their exposure to the sun during the pre-adult years and research shows, that the risk of developing skin cancer is increased by experiencing two or more blistering sunburns as a child; and
- WHEREAS, Over-exposure to UV radiation can also result in painful sunburns, cataracts, a weakened immune system and premature aging, including wrinkles and blotches; and
- WHEREAS, Skin cancer is highly preventable when specific sun-safety behaviors, including the use of sunscreen, protective clothing, wide-brimmed hats and sunglasses with UV protective lenses are adopted and where these behaviors are supplemented by environmental guidelines and sun protection policies, such as the provision of shade structures are implemented; therefore, be it
- RESOLVED, That the Pennsylvania PTA and its constituent associations advocate the importance of skin protection and promote the awareness of the high incidence of skin cancer and the recommended strategies for reducing risk for this disease, and be it further
- RESOLVED, That the Pennsylvania PTA and its constituent associations encourage local school districts and child care settings to follow the comprehensive set of SUN SAFETY GUIDELINES published by the Center for Disease Control (CDC).

Rationale: Skin care awareness, both in and out of the school, is of the utmost importance. This Resolution contains the most up to date information on this very important issue and is written to encompass prevention measures along with awareness of the plight for all children to wear protection when outdoors.



## Mandatory (Compulsory) Age to Enter School in Pennsylvania

*This position statement was adopted by the Pennsylvania PTA State Board of Managers at the April 29, 2017 Board of Managers meeting. Members can begin advocating on this issue immediately.*

Compulsory school attendance refers to the minimum age required by a state in which a student must be enrolled in and attending public school or some equivalent education program defined by the law. The compulsory age to enter school in the state of Pennsylvania is eight (8) years of age. Only two (2) states, Pennsylvania and Washington, within the United “States”, including the District of Columbia (D.C.), Puerto Rico, American Samoa and the Virgin Islands, have the compulsory age as high as eight (8). The average age, out of these fifty-four (54) “states” require students to enter school (or some equivalent education program such as private schools, home schooled, etc.) at the compulsory age of six (6), for a total of twenty-four (24) “states”, the age of seven (7) is next with sixteen (16) “states”, and eight (8) “states” have the mandatory age set at five (5).

Pennsylvania PTA is dedicated to furthering the mission set forth by the association’s founders, Phoebe Apperson Hearst and Alice McLellan Birney, who in 1897, called all concerned parents to Washington, DC to begin advocacy efforts that would enhance every child’s development, such as enacting child labor laws and providing for school lunches. Today, through writing Position Papers and Resolutions that provide accurate and up to date information, Pennsylvania PTA continues that legacy by providing our members with the information they need to strive for a better education that meets the needs of today’s world. The Pennsylvania PTA Board of Managers is continually striving to advocate for issues that resonate with our members to ensure Pennsylvania students obtain the education and tools they need to move forward in our society. Entering school at the age of eight (8) not only sets our children and youth back an average of two years, but also allows this commonwealth to be in the highest possible percentage (97.98%) of the fifty-four (54) “states” to not provide such basic needs beginning at the age of five (5), such as; hand and body movement and development, language and social skills, and emotional milestones. Therefore, Pennsylvania PTA advocates for and supports:

- Legislation to lower the mandatory age to enter school to the “states” average age of six (6).
- The necessity for our children and youth to acquire executive function and self-regulation successfully, skills which do not wait until the age of eight (8) to develop, so that both individuals and society experience lifelong benefits such as children controlling rash responses, children adjusting to rules that continually change, students’ ability to manage long-term assignments, to be ready to meet the challenges of the 21st century. *(Center on the Developing Child, Harvard University)*
- The realization that our children are not born with much needed skills, they are born with the potential to develop them, in their brains, such as the skills to hold onto and work with information, to focus thinking, and to filter distractions. The full range of abilities continues to grow and mature through the teen years and into early adulthood. It is a disservice to our children and youth to begin these developments at the age of eight (8). *(Center of the Developing Child, Harvard University)*
- A child’s brain is already 80% formed by the age of three (3) and 90% formed by the age of six (6). Waiting until the age of eight (8) for our students to enter school has our children already at a greater loss than children entering school at the age of six (6). *(<http://developingchild.harvard.edu>)*
- Educators have long emphasized the importance of learning to read in the early grades, a belief supported by longitudinal research. A strong and early start in reading and mathematics is crucial for students to develop the ability to learn by being accustomed to activities and methods in kindergarten (or before) and first grade, that develop children’s sound awareness and their knowledge of the relationship between letters and sounds. *(<http://www.earlychildhoodteacher.org/certification/pennsylvania>)*

Pennsylvania PTA realizes that lowering the mandatory age to enter school from the age of eight (8) to the age of six (6) will impact the budget because more students will enter classrooms within the commonwealth and thus, an increase in teachers will be required. We must all ask ourselves what the outcome of joining the majority of what other “states” already recognize, that early investments in high-quality learning opportunities have been shown to provide both short and long term positive impacts on children’s future outcomes that provide long-term benefits to society. *(The U.S. Department of Health and Human Services and the U.S. Department of Education)*

April 2017

# Pennsylvania PTA Resolutions: Accomplished

## TECHNOLOGY EDUCATION

- WHEREAS, Our body of knowledge has grown rapidly in the last two decades and will continue to grow even more rapidly in the 21st century; and
- WHEREAS, All of the technological knowledge we work with today will represent only a small percentage of the knowledge that will be available in the year 2050, and
- WHEREAS, PTA believes that all students should have equal access to technology training as it will be an integral part of their future lives and careers; therefore, be it
- RESOLVED, That Pennsylvania PTA and its constituent organizations foster public awareness of the importance of technology education and its future potential and provide opportunities for parents to understand the technology that their children are learning and using in the schools; and, be it further
- RESOLVED, That Pennsylvania PTA and its constituent organizations encourage the inclusion of parents and the community in the development and implementation of long-range plans for technology education in their schools and school districts; and, be it further
- RESOLVED, That Pennsylvania PTA and its constituent organizations urge administrators and school boards to increase use of technology in the classroom.

ADOPTED, 1995  
REVIEWED, 2001  
AMENDED, 2007

Rationale: Technology is used on a daily basis, from alarms on cell phones waking you up in the morning, to the school cafeteria for students to pay for their meals, to parents checking their students' grades and progress, to accelerated reading courses, to testing, only to name a few. Many Pennsylvania public school districts are equipped with a Smartboard and many of our classrooms use Chrome books or Macs, especially in the upper grades. G Suite for Education, formerly known as Google Apps for Education, is also used by students and teachers in our classrooms. Administrators and School Boards alike realize that maintaining up to date with technology in today's world is not only important, but vital to our children's education. Marking this Resolution "Accomplished" is the only viable action to be taken as all the Resolved Clauses have been accomplished.

### ***Exercise your right to VOTE!***

*Be sure to attend General Meetings to have your voice be heard.  
You'll have the opportunity to vote on the Pennsylvania PTA's*

- ★ 2017-2019 State Board of Managers
- ★ Proposed Bylaw Amendments
- ★ Resolutions

### AIR QUALITY in SCHOOL BUILDINGS

- WHEREAS, According to the EPA there is an increasing awareness of health problems arising from poor indoor air quality; and
- WHEREAS, Air pollution levels can be far greater indoors than outdoors due to improperly designed or maintained heating, ventilation and air-conditioning systems and pollutants from equipment, furniture and supplies in a building; and
- WHEREAS, The total effect of various pollutants such as biological agents (bacteria, viruses, fungi, pollen, dust mites and molds) as well as carbon monoxide and chemical and organic compounds found in furniture, paint, carpets, construction materials and supplies can result in unhealthy air and cause allergic reactions, headaches, lethargy, dizziness, nausea and other short and long-term health effects; and
- WHEREAS, Parents may diagnose and control air-quality problems in their own homes, their children may be exposed during the school day to pollutants in their school buildings; and
- WHEREAS, Workers in most federal, state and private buildings are ensured of a reduced risk of poor indoor air quality through mandatory enforcement policies to maintain, repair and adjust ventilation systems; children and parents must rely on school districts to voluntarily monitor and improve air quality, therefore be it
- RESOLVED, That the Pennsylvania PTA through its constituent bodies provide awareness programs for parents and the community on the effects of poor indoor air quality and methods for improving indoor air quality in the home, school and community; and, be it further
- RESOLVED, That the Pennsylvania PTA local units and councils urge their respective school districts to provide air quality monitoring equipment that would ensure a healthy school environment; and, be it further
- RESOLVED, That the Pennsylvania PTA and its constituent bodies encourage school districts to conduct an annual air quality assessment; and, be it further
- RESOLVED, That the Pennsylvania PTA encourage its constituent bodies to urge school districts to name an indoor Air Quality Coordinator; and, be it further
- RESOLVED, That the Pennsylvania PTA seek and support legislation that would require mandatory guidelines for ventilation maintenance codes for school buildings that include provision for an enforcement program and funding to ensure compliance when an indoor air quality problem arises.

ADOPTED, 1996  
REVIEWED, 2003  
REVIEWED, 2017

# Pennsylvania PTA Resolutions: Reviewed 2017

## PARENTAL INVOLVEMENT IN EDUCATION

- WHEREAS, One of the objects of the PTA is to bring into closer relation the home and the school, that parents and teachers may cooperate intelligently in the education of children and youth; and
- WHEREAS, Research indicates a positive correlation between family-school collaboration and student achievement; and
- WHEREAS, Research also shows that the policies, programs, and practices of schools can determine whether parents will be involved, the extent of their involvement and in what capacity; be it therefore
- RESOLVED, That the Pennsylvania PTA urge the State Board of Education or General Assembly to develop a formal parent involvement statement requiring a comprehensive program of parent involvement at all grade levels in a variety of roles; and be it further
- RESOLVED, That the Pennsylvania PTA urge local units and councils to encourage school boards to develop parent involvement policies which would support parents as decision makers and develop their leadership in governance, advisory and advocacy roles.

ADOPTED, 1991  
REVIEWED, 1997  
REVIEWED, 2003  
REVIEWED, 2007  
REVIEWED, 2012  
REVIEWED, 2017



## 2017 Convention Rules

1. All delegates, guests, and visitors must display official convention identification to enter the general meetings, workshops, and exhibit areas.
2. Only delegates are eligible to participate in business on the convention floor by showing their voting card. Delegates shall be seated in sections designated as voting sections.
3. Delegates wishing to speak will go to the appropriate microphone, present their voting card to the microphone attendant, sign in, and wait for recognition by the chair before speaking. When recognized, delegates will give their name and local unit or council represented.
4. No resolutions, other than those submitted for consideration as emergency resolutions, will be introduced from the convention floor. The urgency of the subject matter must have arisen after the deadline for submission of resolutions (April 1, 2017). The resolution must conform to all established criteria for resolutions as established and adopted by the Pennsylvania PTA Board of Managers.
5. A delegate may speak up to two minutes at a time on any question and only twice on the same question. No delegate may speak a second time until all delegates seeking recognition have had an opportunity to speak.
6. Items of business, including a resolution or a proposed bylaw amendment, shall be on the floor for no more than twenty (20) minutes (inclusive of all points of order and points of information). To extend debate time, the motion to extend debate must be adopted by a two-thirds (2/3) vote.
7. The chair shall recognize delegates FOR and AGAINST a motion in alternating order.
8. During all voting, the doors will be closed and admission will be granted only after the chair announces the results of the vote.
9. The Election and Campaign Guidelines, Emergency Resolution process, and General Convention Information contained in this program shall be strictly adhered to and enforced.

## Emergency Resolutions

1. No resolutions, other than those submitted for consideration as emergency resolutions, will be introduced from the convention floor.
2. The urgency of the subject matter must have arisen after the deadline for submission of resolutions (**April 1**). The resolution must conform to all established criteria for resolutions as established by the Pennsylvania PTA.
3. The resolution must be signed by thirty (30) accredited voting delegates representing a majority of the regions of the Pennsylvania PTA. Before presentation, signatures must be verified for current voting status by the Convention Credentials Committee and will be placed on file with a copy of the emergency resolution attached.
4. A delegate presenting an emergency resolution must present a copy of the resolution, accompanied by background data as required by Pennsylvania PTA and the Resolutions Submission Form, to the Convention Registration Desk attendant, no later than 1:00 PM on the day of General Meeting I. The attendant will immediately submit the Resolution to the Legislation & Advocacy Chairman.
5. A two-thirds vote in the affirmative, of the convention body, is required for consideration of the resolution.
6. If the convention body gives the affirmative vote to consider, a copy of the resolution must be supplied, by the group or individual submitting the resolution, for each delegate in attendance at convention. The resolution shall only be distributed after the two-thirds vote required for consideration is obtained.
7. The originator of the resolution, who must be a delegate registered for convention, or their designated member (who must also be a registered delegate at convention) may speak first to the resolution.



## Elections & Campaign Guidelines

### Intent to Run from the Floor

1. Candidates intending to run from the floor must submit the Letter of Intent to Run from the Floor/ Self Nomination Form with the accompanying documents to the state office via e-mail ([info@papta.org](mailto:info@papta.org)) or FAX (1-717-564-8985-call first), addressed to the attention of the chairman of the committee on nominations and the state PTA president, at least forty-five (45) days prior to General Meeting I.
2. The chair will open the floor for nominations immediately following the report from the Committee on Nominations. The nominee (who has given the required notice) shall be nominated at General Meeting 1 and shall provide a signed consent to serve.

### Campaign Materials

1. Permitted campaign materials shall consist only of one (1) 8½ by 11-inch tri-fold and/or one (1) 8½ by 11-inch one-sided sheet of paper with the candidate's biography. No other campaign materials shall be permitted.
2. All campaign materials must be submitted for content approval via e-mail ([info@papta.org](mailto:info@papta.org)) or FAX (1-717-564-8985) (must call first), addressed to the attention of the Chairman of the Committee on Elections and the Pennsylvania PTA President, at least thirty (30) days prior to General Meeting I.
3. Copying of all pre-approved campaign materials shall be the sole responsibility of the candidates.
4. The Pennsylvania PTA email system, stationery, mailing lists, social media accounts, and/or bulk rate permits shall not be used for campaigning.
5. No one in the voting area or voting room shall be permitted to distribute campaign materials for any candidate.
6. Campaign materials shall not be distributed until the close of General Meeting I.
7. Copies of all pre-approved candidates' materials shall be distributed only at the conclusion of General Meeting I by being placed on a table designated by the President.
8. No campaigning shall be permitted by anyone until the close of General Meeting I at the convention site or at the convention hotel.

### Speeches

1. Nominations from the floor will be limited to no more than a two (2) minute nomination statement. There will be no seconding of the nomination.
2. The qualifications of the nominee presented by the Committee on Nominations shall be read by the Committee on Nominations chairman and shall be limited to two (2) minutes per nominee. The Committee on Nominations chairman shall then read the qualifications (as described under Campaign Materials, #1) of the candidates running from the floor, in alphabetical order for each office and/or chairmanship.
3. Each nominee shall be permitted up to, but not exceeding, five (5) minutes to address the Convention body. The nominee selected by the Committee on Nominations shall be given preference in the order of addressing the delegates.

### Elections

1. Delegates intending to participate in the election shall be registered for convention prior to the start of General Meeting I.
2. When there is only one candidate, that election shall be held by voice vote. When there is more than one nominee the vote to elect shall be conducted by ballot and a majority vote shall elect. If there are more than two nominees for an office and a nominee does not receive a majority vote on the first
3. ballot, re-balloting shall take place on the two nominees receiving the highest votes. (Refer to Pennsylvania PTA Bylaws, Article VIII: Board of Managers, Section 3. Election, a. & b.).
4. Balloting for the election, when necessary, shall be held on the date and time specified in the convention program. A majority vote shall be required for election. The Report of the Committee on Elections will be presented prior to the conclusion of General Meeting II.
5. Ballots and tally sheets shall be sealed and given to the Pennsylvania PTA Secretary. Ballots shall be destroyed immediately following the conclusion of General Meeting II, after the results are announced.

## General Convention Information

1. Smoking is prohibited during any convention function.
2. Cell phones shall be silenced during all business meetings and workshops. Videoing and/or recording of the business meetings and workshops is prohibited, unless approved prior by the President.
3. All delegates and guests must display official convention identification to enter the general meetings, workshops, and exhibit areas. Convention identification badges are not transferable.
4. All meetings will be called to order on time. Delegates are requested to be seated at least five (5) minutes prior to the opening of each session. Doors shall be closed when the meeting convenes. Those arriving late will be admitted upon direction of the pages.
5. Delegates shall receive a voting card required for voting in business meetings. In an election year, a portion of the card shall be exchanged for a ballot.
6. A delegate who has registered in advance will present a current PTA membership card at the convention registration desk to receive official credentials, a badge, a program, and workshop and special event tickets. Each delegate shall present a PTA membership card from the unit represented.
7. Accredited news media representatives will be issued PTA press passes on a daily basis at the PTA registration desk. A press pass will expire at the end of the day it is issued. Reporters will be permitted to sit in the guest section of the general meetings to cover proceedings. Reporters may not participate in question-and-answer periods provided in some workshops, a privilege extended only to participating PTA delegates. All interviews, including those with program participants or with PTA officials, must be arranged through the Pennsylvania PTA President or their designee.
8. The minutes of the Convention shall be audited by a committee of two (2) individuals.
9. The minutes of the Convention shall be approved by the State Board of Managers.
10. The Chair shall determine and adjust the agenda as required for smooth operation of the assembly. Therefore, the printed agenda is for guidance only and shall not be considered either general or special orders.
11. No material shall be presented directly to the Presiding Officer. All messages, announcements, and motion forms must be given to a page or other designated person and delivered to the Head Teller.
12. No one may approach the podium during General Meetings.
13. Announcements to the convention body shall be made only from the podium and only by the Presiding Officer.
14. As applicable, only those individuals or groups who have purchased space in the exhibit hall or have been approved by the President shall sell or distribute material at the convention. Exhibitor sales activities must be confined to the limits of the exhibit booth.
15. The President or President's designee shall approve all material prior to its distribution at convention. Materials to be distributed shall be submitted for approval no later than 12:00 noon the day before General Meeting I.

## Your School Can Win This Guitar

This beautiful guitar has been donated to Pennsylvania PTA by Guitar Center and will be given it to a lucky PTA school.

The rules are simple:

- ♦ You must be a registered delegate to Pennsylvania PTA Convention 2017.
- ♦ You must be present at the Sunday morning Awards Breakfast when the drawing takes place.
- ♦ You must complete an entry form and put it in the designated container.
- ♦ You must sign that you will donate the guitar to your school's music department.
- ♦ You must take it with you. Pennsylvania PTA will not mail the guitar.



## Seeking Items for Convention Delegate Bags

Everyone loves a bag chock-full of goodies! If you have items you can donate for the delegate bags at convention, we'd love to have them! Any amount is welcomed, but if you can send 150 of each item that would be wonderful! Items like pens, pencils, tablets, tissues, snacks, water, etc. are always appreciated. These items may be sent to :

West Mifflin Area Middle School  
Attention: Claudine Walasik  
81 Commonwealth Avenue  
West Mifflin, PA 15122

Or call: (412) 466-9131 ext 2009



## Commemorative Convention T-Shirts

Be sure to order your commemorative Convention T-Shirt on the Registration Form page.

- ◆ Black with Convention logo in full color.
- ◆ High quality for comfort and durability.
- ◆ Pre-orders only (extras will not be available for sale).
- ◆ See registration form for sizes and prices.
- ◆ Shirts will be available for pick up at the registration desk.



**Presidents... please share this Call to Convention with your PTA Members!**  
**Presidents who are leaving office... please give it to your successor to share with their board!**

Remember that all correspondence is sent to you as the president. It is your duty to ensure your members benefit from it as well. Please share this publication, and all information you receive from State and National PTA, with your members so that they too can benefit from it. Encourage members to visit [www.papta.org](http://www.papta.org). The *Members Only* section is full of resources that will make them more efficient PTA leaders. To download a PDF version of this and all issues of *PTA in Pennsylvania* visit the "Members Only" section at [www.papta.org](http://www.papta.org).

## Future Conventions...

### *Coming to an area near you???*

Pennsylvania PTA is seeking locations for the 2019 & 2020 Conventions.

The 109<sup>th</sup> Annual Pennsylvania PTA Convention will be in Erie in 2018. If your local PTA(s) or Council is interested in hosting the 2019 or 2020 convention, and there is a hotel and/or conference center in your area that is appropriate to hold convention, please contact the state office to get more information on specifics and requirements.

Pennsylvania PTA: [info@papta.org](mailto:info@papta.org) or 717-564-8985

## Local Convention Committee Needs You!

### *Calling All PTAs in and around the Pittsburgh Area...*

Would you like to help in the planning of the 2017 Pennsylvania PTA Annual Convention? The Local Convention Committee will be holding monthly planning meetings from now through convention and would love for you to join them! If you or others from your PTA can help out, please let us know. The meetings will be held:

|              |                    |                                 |
|--------------|--------------------|---------------------------------|
| May 31       | 6:30 pm – 8:30 pm  | West Mifflin Area Middle School |
| June 15      | 11:30 am - 1:30 pm | West Mifflin Area Middle School |
| July 18      | 6:30 pm – 8:30 pm  | Panera Bread                    |
| August 11    | 11:30 am - 1:30 pm | Panera Bread                    |
| August 28    | 6:30 pm – 8:30 pm  | West Mifflin Area Middle School |
| September 15 | 11:30 am - 1:30 pm | West Mifflin Area Middle School |
| September 28 | 6:30 pm – 8:30 pm  | West Mifflin Area Middle School |
| October 13   | 11:30 am - 1:30 pm | @CONVENTION VENUE               |
| October 17   | 6:30 pm – 8:30 pm  | West Mifflin Area Middle School |

Any questions please contact Local Convention Coordinator,  
Claudine Walasik at 412-606-4538 or [Walasikc@wmasd.org](mailto:Walasikc@wmasd.org).

West Mifflin Middle School, 81 Commonwealth Avenue, West Mifflin, PA 15122

Panera Bread, 623 Clairton Boulevard (Route 51), Southland Shopping Center, Pleasant Hills, PA 15236

## Community Service Project: *Jamie's Dream Team*

The Local Convention Committee is asking those attending convention to support this year's community service project: Collection of items to be donated to ***Jamie's Dream Team***. This non-profit organization, based out of McKeesport, PA, was founded by Jamie Holmes at the age of 18 and has granted over 1,500 dreams in 11 years. Jamie's Dream Team grants dreams to children and adults suffering from a terminal illness, serious medical need, injury, disability, trauma, or tragedy. Delegates are asked to bring new items on the list below to convention, or to make monetary donations. Checks only please, and payable to Jamie's Dream or make a donation on their website, [www.jamiesdreamteam.org](http://www.jamiesdreamteam.org).

|            |                    |                   |
|------------|--------------------|-------------------|
| Copy paper | Paper towels       | Hand soap         |
| Folders    | Toilet paper       | Bottled water     |
| Pens       | Contractor bags    | Cans of Soda/Pop, |
| Envelopes  | White kitchen bags | Iced Tea/Lemonade |
| Stamps     |                    |                   |

If you have any questions, please contact Theresa Sekely  
at 412-799-3713 or [tsekely2678@gmail.com](mailto:tsekely2678@gmail.com).



## Basket Raffle

Would you or your PTA like to donate a basket for the Basket Raffle? We are currently soliciting donations of theme baskets representing the diverse interests and culture of our PTA community. Fill a basket (or box, or tin, or any container) with items from your local community, goodies representing your favorite past-time or any collection of articles you think any convention attendee will covet. Popular basket themes seem to be Beach Party, Sport Fun, Movie Night, Coffee Break, Barbecue Master, Pamper Yourself, Family Game Night, Pleasures of Chocolate, Ladies' Night, Team Spirit, Car Emergency Kit, etc. Gift certificates make great "baskets" as well.

Our goal is to have a nice representation from local and council PTAs from across the state. If you let us know by September 1 if your PTA will be donating a basket we will be able to recognize the donation in the Convention Program. Please contact Kim McElroy at [mcelroyk@wmasd.org](mailto:mcelroyk@wmasd.org) if your PTA will be bringing a basket to convention.



## Local Convention Committee Needs Your Support

This is an exciting time to be part of PTA! With plans underway for the 2017 Convention we're looking for donations to help build ***Bridges to Champions***.

There will be local area students performing and PTA members volunteering during the convention. The Local Convention Committee will be hosting a hospitality suite for these volunteers and providing refreshments and appreciation gifts for the performing students. We are seeking support from individuals, businesses, local and council PTAs from each of the regions to help defray the costs of hosting the convention.

All donations will be acknowledged in the convention program, which is received by all delegates. Donors' names will also be put on our ***Bridges to Champions*** board, which will be on display throughout the convention. The following donation levels will be displayed, however any donation will be much appreciated:

***"Bridges to Champions"*** theme for monetary donations with the following tiers:

***\$25 Pirates***

***\$50 Penguins***

***\$75 Steelers***

***\$100 Roberto Clemente Bridge***

In order for your donation to be included in the convention program, please return the donation and form below no later than **September 1, 2017**.

Donations are to be made payable to Pennsylvania PTA and mailed to:  
Pennsylvania PTA, Local Convention Committee, 4804 Derry Street, Harrisburg, PA 17111

Thank you for all you do for every child. And thank you for helping to ***Build Bridges!***

Contact Person Name/Phone # \_\_\_\_\_

PTA (if applicable) \_\_\_\_\_ Region # \_\_\_\_\_

Company Name & Address \_\_\_\_\_  
\_\_\_\_\_

Please check your donation level:

\_\_\_\_\_ ***\$100 Roberto Clemente Bridge***

\_\_\_\_\_ ***\$75 Steelers***

\_\_\_\_\_ ***\$50 Penguins***

\_\_\_\_\_ ***\$25 Pirates***

Donation is from: \_\_\_\_\_ Individual \_\_\_\_\_ Local PTA \_\_\_\_\_ Council PTA \_\_\_\_\_ Business

Please make donations payable to Pennsylvania PTA and mail to:  
Pennsylvania PTA, Local Convention Committee  
4804 Derry Street, Harrisburg, PA 17111

***Make a copy of this page to submit.***

### ***A Good Investment in Your PTA***

Convention costs are legitimate expenses that should be included in your PTA budget. Register today and discover one of the best investments you can make in yourself and your PTA this year!

## Helpful Hints for Convention

### Convention Registration Procedure

Each delegate must send the completed Convention Registration Form and one Voter ID Card (centerfold) to the Pennsylvania PTA office for processing. Mail completed registration form, Voter ID Card and payment to: Pennsylvania PTA, 4804 Derry Street, Harrisburg, PA 17111.

### Voter Identification Cards

Four ID Cards are included in the center of this publication. In order to vote at Convention, each delegate must have their own original Voter Identification Card. Additional cards are available on request from the Pennsylvania PTA Office. No photocopies will be accepted.

If representing a local PTA / PTSA, the Card must be signed by the president of the local unit being represented. If representing a council, the card must be signed by both the president of the council being represented and the president of a local PTA / PTSA in which delegate is a member. Council delegates (either the council president or alternate) must indicate the name of the council on the Voter ID Card.

### Confirmations

The Pennsylvania PTA office will acknowledge pre-registrations with a confirmation (e-mail or letter) and additional information. Please bring this letter with you when you register at the convention.

### Cancellations

Registration refund requests must be made by **September 30, 2017**, in writing, to the Pennsylvania PTA office. No refunds can be issued after this date.

### Attire

Business-casual attire is recommended for the workshops and general meetings. Due to the fluctuation in temperatures between meeting rooms in the hotel, it is recommended that you have a light jacket or sweater on hand. For the Saturday evening banquet, either business-dress or semi-formal attire is appropriate.

### Upon Arrival at Convention

*Pre-registered Delegates:* Go directly to the Convention Registration Desk and present your confirmation letter and your valid PTA membership card. Each delegate will receive official credentials, a badge, workshop and special event tickets and program.

*Delegates Registering On-Site:* All delegates who have not pre-registered should go to the PTA Convention Registration Desk and complete a Convention Registration Form. Delegates will be required to present a signed Voter ID Card for processing, as well as a valid PTA membership card.

***Be sure to pack your....***

***Phone charger***

***Camera (with plenty of empty memory!)***

***Comfortable Shoes***

***\$\$\$ for when you visit Shop PTA***

***and an Extra Bag to bring all your collected goodies home!***



## Convention Greeting Ads & Patron Contributors Form

The Annual Convention is the official business meeting of the Pennsylvania PTA. At convention, delegates will meet old and new friends, attend workshops, gain valuable leadership skills, browse exhibitor booths, and plan the direction of the state PTA. Local units, councils, and individuals who would like to send greetings in the Convention Program may do so. Your support of PTA is greatly appreciated. Your efforts are what make this association strong and successful.

Information on submitting greeting ads and/or patron contributions is listed below. Please make a copy of this page, then submit the completed form, payment, greeting layout, and patron listing to the state PTA office no later than **September 1, 2017**.

- Camera-ready ads may be submitted as color or black and white, but the convention program will be printed in black and white. Mail to Pennsylvania PTA, 4804 Derry Street, Harrisburg, PA 17111.
- Electronic file formats that can be accepted include Word, JPG, PDF, and Publisher. Email file to [info@papta.org](mailto:info@papta.org) or mail CD to the Pennsylvania PTA, 4804 Derry Street, Harrisburg, PA 17111.

Be sure to share this information with your local and council PTAs, and encourage everyone to show their support of the Pennsylvania PTA.

*(Make a copy of this page to submit.)*

|   |      |                     |                  |
|---|------|---------------------|------------------|
| Name: _____   |      | Phone #: _____      |                  |
| Address: _____  |      |                     |                  |
| City: _____   |      | Zip: _____          |                  |
| Email: _____  |      |                     |                  |
| Name of PTA /Council: _____   |      |                     |                  |
| <b>Greeting Ad Rates:</b>   |      | <b>Quantity</b>     | <b>Sub-Total</b> |
| Full Page   | \$75 | _____               | _____            |
| Half Page   | \$50 | _____               | _____            |
| Quarter Page  | \$25 | _____               | _____            |
| Business Card Size  | \$15 | _____               | _____            |
| <b>Patron Contributors:</b>   |      | <b># of Patrons</b> | <b>Sub-Total</b> |
| Individual Patron   | \$5  | _____ ( x \$5)      | _____            |
| * Please list patrons on separate sheet and submit with this form.  |      |                     |                  |
| <b>Total Amount Enclosed</b>  |      |                     | _____            |
| <p>Make checks payable to: Pennsylvania PTA</p> <p>Mail to: Pennsylvania PTA, 4804 Derry Street, Harrisburg, PA 17111</p> <p><b>Submit greeting layout, patron listings, and payment by <u>September 1, 2017</u> to:</b></p> <p><b>Pennsylvania PTA, 4804 Derry Street, Harrisburg, PA 17111-3440</b></p> |      |                     |                  |

|                     |                       |                      |
|---------------------|-----------------------|----------------------|
| Date Received _____ | For State Office Use: | Acknowledgment _____ |
|---------------------|-----------------------|----------------------|

## Registration & Hotel Fees

| Registration Fees   | By<br>9/8 | By<br>9/21 | After<br>9/21 |
|---|-----------|------------|---------------|
| Member: Combined Leadership Development and Convention Registration with meals. Includes Friday breakfast and lunch; Saturday breakfast, lunch, banquet dinner; Sunday breakfast.   | \$233     | \$248      | N/A           |
| Student: Combined Leadership Development and Convention Registration with meals. Includes Friday breakfast and lunch; Saturday breakfast, lunch, banquet dinner; Sunday breakfast. <i>(Student includes up to Grade 12)</i> | \$203     | \$203      | N/A           |
| Group of 4 or more Members: Combined Leadership Development and Convention Registration. Includes Friday breakfast and lunch. <i>(Price per member, must all be in the same envelope.)</i>                                  | \$100     | \$109      | N/A           |
| Member: Combined Leadership Development and Convention Registration. Includes Friday breakfast and lunch.   | \$104     | \$119      | \$129         |
| Student: Combined Leadership Development and Convention Registration Includes Friday breakfast and lunch  | \$74      | \$74       | \$74          |
| Member: Convention only ( does not include meals)   |           | \$110      | \$120         |
| Student: Convention only (one or two days, does not include meals)  | \$20      | \$20       | \$20          |
| Member: Leadership Development only. Includes Friday breakfast and lunch.   |           | \$110      | \$120         |
| Member: One Day (Convention Registration only. Does not include meals or Leadership Development)  |           | \$55       | \$65          |
| Non-member (Convention Registration only)   | \$125     | \$125      | \$125         |

### Optional Ticketed Events/Meals

|  |      |  |      |
|--|------|--|------|
| Friday Night Reception                   | Free | Saturday Pre-Convention Reception (Cash Bar) | Free |
| Saturday Breakfast                       | \$33 | Saturday Banquet Dinner                      | \$46 |
| Saturday Speed Vending with Box Lunch    | \$25 | Saturday Reception (Cash Bar)                | Free |
| Saturday Speed Vending without Box Lunch | Free | Sunday Awards Breakfast                      | \$25 |

### Hotel Information & Fees

**DoubleTree by Hilton**  
**500 Mansfield Avenue, Pittsburgh PA 15205**

To register by phone, call 412-922-8400.  
*Be sure to tell them you're with the Pennsylvania PTA.*



To register online, visit: [http://doubletree.hilton.com/en/dt/groups/personalized/P/PITGTD-TA-20171019/index.jhtml?WT.mc\\_id=POG](http://doubletree.hilton.com/en/dt/groups/personalized/P/PITGTD-TA-20171019/index.jhtml?WT.mc_id=POG)

A group rate of \$109 plus tax is available to convention attendees. In order to receive the group rate, book your room directly with the hotel no later than September 21, 2017.

Parking & Amenities: The DoubleTree has free parking, an indoor pool/hot tub and gym, and all guest rooms have free WiFi plus a mini-fridge and coffee maker.



## Pennsylvania PTA 2017 Convention Registration Form

A separate form is required for each registrant. This form may be duplicated. If you are taking advantage of the Group Rate, all registration forms must be sent to the state office in one envelope. Registration must be postmarked on or before **September 8, 2017**, to receive discounted registration fees. The deadline for cancellation is **September 30, 2017**. The availability of meal tickets cannot be guaranteed to late or walk-in registrants.

### Contact Information

Name (as it should appear on badge): \_\_\_\_\_

Address: \_\_\_\_\_

City: \_\_\_\_\_ State: \_\_\_\_\_ Zip: \_\_\_\_\_

Phone: \_\_\_\_\_ E-mail: \_\_\_\_\_

Local PTA or Council you are representing (only one): \_\_\_\_\_

County: \_\_\_\_\_ Region: \_\_\_\_\_

Please let us know if any of the following apply to you:

- |   |   |
|---|---|
| <input type="checkbox"/> This will be my first state convention | <input type="checkbox"/> I am a local PTA President   |
| <input type="checkbox"/> I am a Pennsylvania Life Member (PLM)  | <input type="checkbox"/> I am a council PTA President |

☐ I am interested in carpooling. Please share my information with others wishing to carpool.

Emergency Contact Information - Please provide the information of a person who is NOT attending the convention that should be contacted in case an emergency should arise.

Name: \_\_\_\_\_ Phone: \_\_\_\_\_

Known Allergies: \_\_\_\_\_

☐ Check here if you have any special dietary needs or require special accommodations in order to participate fully in this convention. You will be contacted by a staff member to discuss your specific needs.

**Payment:** Please complete the registration form price sheet on the back of this page to calculate the amount due.

Total Payment for this delegate: \$\_\_\_\_\_

☐ Cash ☐ Check (Payable to: Pennsylvania PTA) ☐ Visa ☐ MasterCard ☐ Discover

Name on card: \_\_\_\_\_

Card Number: \_\_\_\_\_ Exp. Date: \_\_\_\_\_

Signature: \_\_\_\_\_ Security Code: \_\_\_\_\_

### Did you remember to:

- |  |  |
|--|--|
| <input type="checkbox"/> Return Convention Registration Form? (one per registrant)                 | <input type="checkbox"/> Select Workshops? |
| <input type="checkbox"/> Return <u>Signed</u> Voter Identification Card? (one per voting delegate) | <input type="checkbox"/> Return Payment?   |

Pennsylvania PTA - 4804 Derry Street - Harrisburg, PA 17111  
Questions? Call (717)564-8985 or email [info@papta.org](mailto:info@papta.org)

Please fill out the back of this page also.

# Pennsylvania PTA 2017 Convention Registration Form

**Name:** \_\_\_\_\_

|  | Check applicable   | By Sept. 8 | By Sept. 21       | After Sept. 21                   | Total Due |
|--|--|------------|-------------------|----------------------------------|-----------|
| <b>Combined Leadership Development and Convention Registration with meals</b><br><i>Includes Friday breakfast and lunch; Saturday breakfast, lunch, banquet dinner; Sunday breakfast</i> |  |            |                   |                                  |           |
|  | <b>Combined Member</b> Leadership Development and Convention Registration  | \$233      | \$248             | N/A                              |           |
|  | <b>Combined Student</b> Leadership Development and Convention Registration (up to Grade 12)  | \$203      | \$203             | N/A                              |           |
| <b>Combined Leadership Development and Convention Registration</b><br><i>Includes Friday breakfast and lunch</i>   |  |            |                   |                                  |           |
|  | <b>Group of 4</b> or more members in the same envelope Combined Member Leadership Development and Convention Registration: (per member rate) | \$100      | \$109             | N/A                              |           |
|  | <b>Combined Member</b> Leadership Development and Convention Registration: Member  | \$104      | \$119             | \$129                            |           |
|  | <b>Combined Student</b> Leadership Development and Convention Registration: Student (up to Grade 12)   | \$74       | \$74              | \$74                             |           |
| <b>Convention Registration only (does not include meals)</b>   |  |            |                   |                                  |           |
|  | <b>Member Convention</b> only ( does not include meals)  |            | \$110             | \$120                            |           |
|  | <b>Student</b> (Convention Registration only - one or two days)  | \$20       | \$20              | \$20                             |           |
| <b>Single Day Rates</b>  |  |            |                   |                                  |           |
|  | <b>Member Leadership Development</b> only<br><i>Includes Friday breakfast and lunch</i>  |            | \$110             | \$120                            |           |
|  | <b>Member One Day</b> (Convention Registration only, does not include meals or Leadership Development)                                       |            | \$55              | \$65                             |           |
|  | <b>Non-member</b> (Convention Registration only, does not include meals or Leadership Development)   | \$125      | \$125             | \$125                            |           |
|  | <b>T-shirts</b> (Pre-orders only) (please enter # of each size)<br>Size _____ S _____ M _____ L _____ XL                                     | \$12       |                   |                                  |           |
|  | Size _____ 2XL _____ 3 XL _____ 4XL  | \$14       |                   |                                  |           |
| <b>Special Ticketed Events – Please check all you will be attending. Pre-registration is required for the following events.</b>  |  |            |                   |                                  |           |
|  | Friday Night Reception   |            |                   | Free                             |           |
|  | Saturday Breakfast   |            |                   | \$33                             |           |
|  | Saturday Speed Vending with Box Lunch <i>(Roast Beef, Turkey, Veggie, or Ham)</i>  |            | Meal Choice _____ | \$25                             |           |
|  | Saturday Speed Vending without Box Lunch   |            |                   | Free                             |           |
|  | Saturday Pre-Convention Reception (Cash Bar)   |            |                   | Free                             |           |
|  | Saturday Banquet Dinner <i>(Pork Loin, Chicken Breast, or Tilapia)</i>   |            | Meal Choice _____ | \$46                             |           |
|  | Saturday Reception (Cash Bar)  |            |                   | Free                             |           |
|  | Sunday Awards Breakfast  |            |                   | \$25                             |           |
|  |  |            |                   | <b>Total Amount Due \$</b> _____ |           |

*Please list desired workshop numbers below. Every effort will be made to assign workshops selected. Request tickets only for the workshops you plan to attend. Workshop tickets will be given upon check-in at the Convention Registration Desk.*

| Workshop Selections                       | 1 <sup>st</sup> Choice (workshop #) | 2 <sup>nd</sup> Choice (workshop #) | 3 <sup>rd</sup> Choice (workshop #) |
|---|-------------------------------------|-------------------------------------|-------------------------------------|
| Workshop 1 (Friday 11:15 am – 12:15 pm)   |                                     |                                     |                                     |
| Workshop 2 (Friday 12:30 pm – 1:30 pm)    |                                     |                                     |                                     |
| Workshop 3 (Friday 2:15 pm – 3:15 pm)     |                                     |                                     |                                     |
| Workshop 4 (Friday 4:00 pm – 5:00 pm)     |                                     |                                     |                                     |
| Workshop 5 (Saturday 9:15 am – 10:15 am)  |                                     |                                     |                                     |
| Workshop 6 (Saturday 10:30 am – 11:30 am) |                                     |                                     |                                     |
| Workshop 7 (Saturday 2:10 pm – 3:00 pm)   |                                     |                                     |                                     |

# Pennsylvania PTA State Board of Managers

## OFFICERS

### President - Debbie Munson

610 Roslyn Avenue, Erie, PA 16505  
H-814-838-6123, C-814-651-3227.....dmunson@papta.org

### President-Elect - Bonita Allen

6554 Northumberland Street; Pittsburgh, PA 15217  
412-422-4350.....ballen@papta.org

### Secretary - Bonnie Fagan

5316 Astronaut Drive, Fairview, PA 16415  
814-449-0996.....bfagan@papta.org

### Treasurer - Cindy Horner

141 Millgate Road, Bellefonte, PA 16823  
814-404-0572 .....chorner@papta.org

## REGION DIRECTORS

**Region 1 - Vacant** *Contact the state office*

### Region 2 - Janice Cain

112 Carroll Street, Aliquippa, PA 15001  
724-417-6071.....jcain@papta.org

**Region 3 - Vacant** *Contact the state office*

**Region 4 - Vacant** *Contact the state office*

**Region 6 - Vacant** *Contact the state office*

### Region 7 - Sharon Sitch-Brode

1200 Mifflin Street, Saxton, PA 16678  
814-635-2351.....sbrode@papta.org

### Region 10 - Jennifer White

228 S. 4<sup>th</sup> Street, Sunbury, PA 17801  
570-556-0702.....region10director@papta.org

**Region 11 - Vacant** *Contact the state office*

**Region 12 - Vacant** *Contact the state office*

**Region 13 - Vacant** *Contact the state office*

### Region 14 - Tricia Dietz

122 Fulton Street, Simpson, PA 18407  
570-267-6378.....tdietz@papta.org

### Region 15 - Nancy Karpovich

528 Wilkes-Barre Street, Hanover Township, PA 18706  
570-407-1345.....nkarpovich@papta.org

### Region 16 - Jennifer McAndrew

32 Thorn Street, Carbondale, PA 18407  
570-780-8537.....jmcandrew@papta.org

## STATE CHAIRMEN

### Arts In Education - Nellie Connolly

21 Kane Street, Carbondale, PA 18407  
570-955-9924.....nconnolly@papta.org

### Bylaws & Policies - Julie Lesitsky

PO Box 214, Albrightsville, PA 18210  
570-977-2308.....bylaws@papta.org

### Family Engagement - Dawn Harrison

6119 Footemill Rd, Erie, PA 16509  
814-825-8755.....familyengagement@papta.org

**Health & Safety - Vacant** *Contact the state office*

### Legislation & Advocacy - Tara Purcell

151 Chestnut Street, Kulpmont, PA 17834  
570-875-8733.....advocacychair@papta.org

### Membership & Extension - Ginny Wade

148 West Main Street, Pottstown, PA 19465  
610-326-5659.....gwade@papta.org

**Resource Development - Vacant** *Contact the state office*

### Technology & Social Media - Kali Wade

148 West Main Street, Pottstown, PA 19465  
610-326-5659.....tech@papta.org

## Consultants to the State Board of Managers

|                |            |
|----------------|------------|
| Caroline Allen | Harrisburg |
| Philip Horn    | Harrisburg |
| Michele Morrow | Bath       |

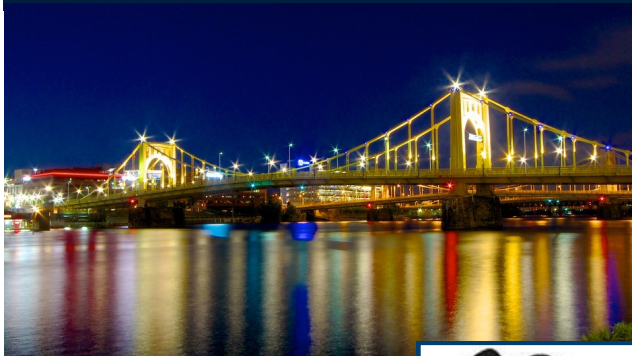
## Pennsylvania PTA State Office & Staff

4804 Derry Street, Harrisburg, PA 17111  
717-564-8985 info@papta.org  
Website: www.papta.org  
Mary Hess mhess@papta.org

**PTA in Pennsylvania Editor** - Michele Morrow

Periodical  
Postage Paid  
Harrisburg

# SEE YOU IN



# PITTSBURGH

*"THE CITY OF BRIDGES"*